

VEG3D – Overview

CORDEX FPS - LUCAS

Institute for Meteorology and Climate Research -Troposphere Research

Marcus Breil
Institute of Meteorology and Climate Research,
Karlsruhe Institute of Technology (KIT)

LUCAS - Land Use and Climate Across Scales

Investigate the impact of land use change on the regional climate

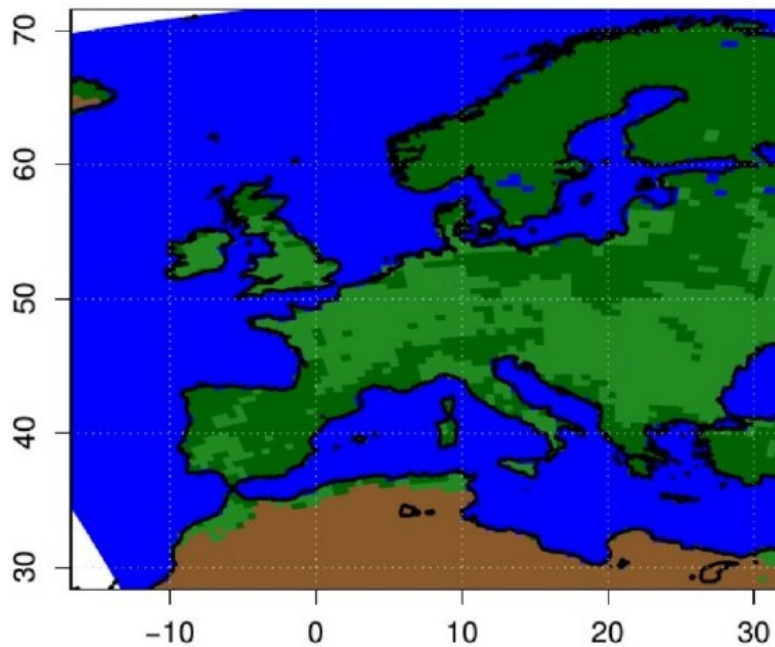
→ regional climate simulations with different RCMs and LSMs

3 project phases:

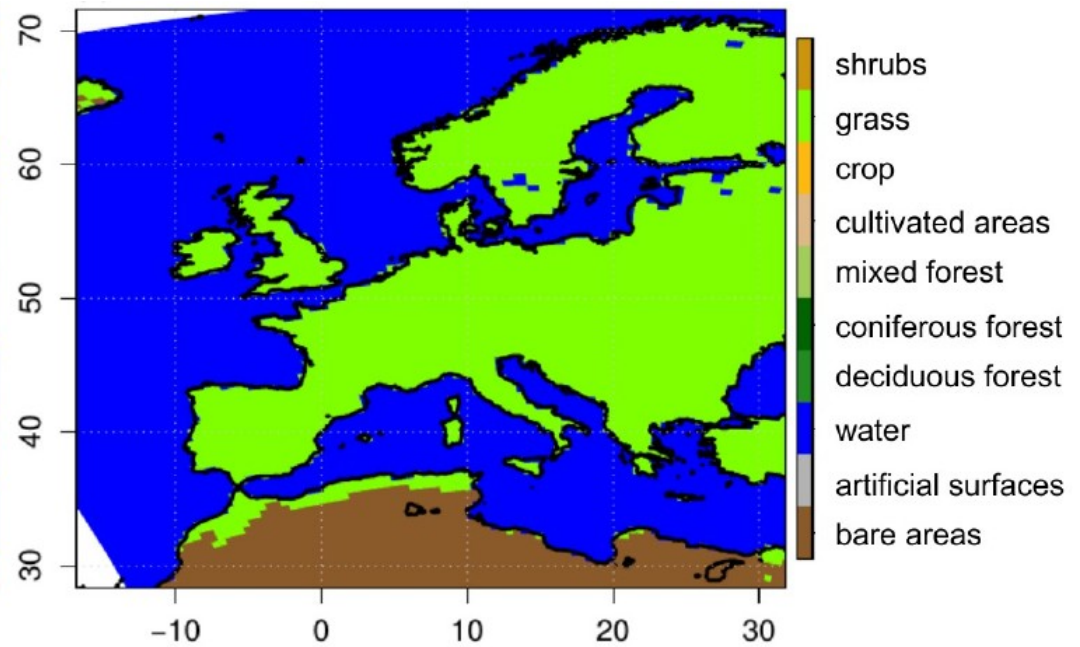
- Phase 1: Idealized experiments
- Phase 2: Realistic experiments
- Phase 3: High resolution experiments

Landuse Maps

FOREST-Map

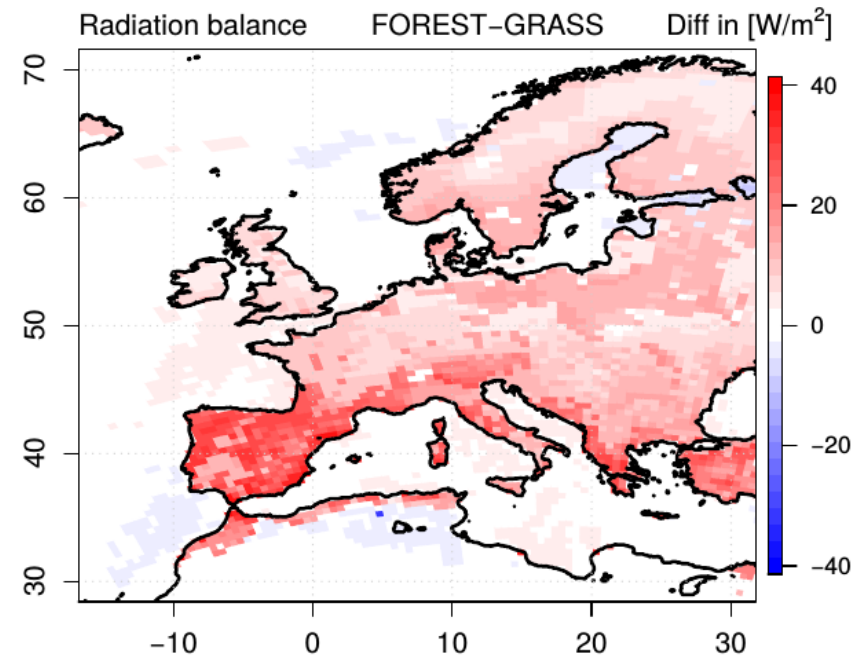
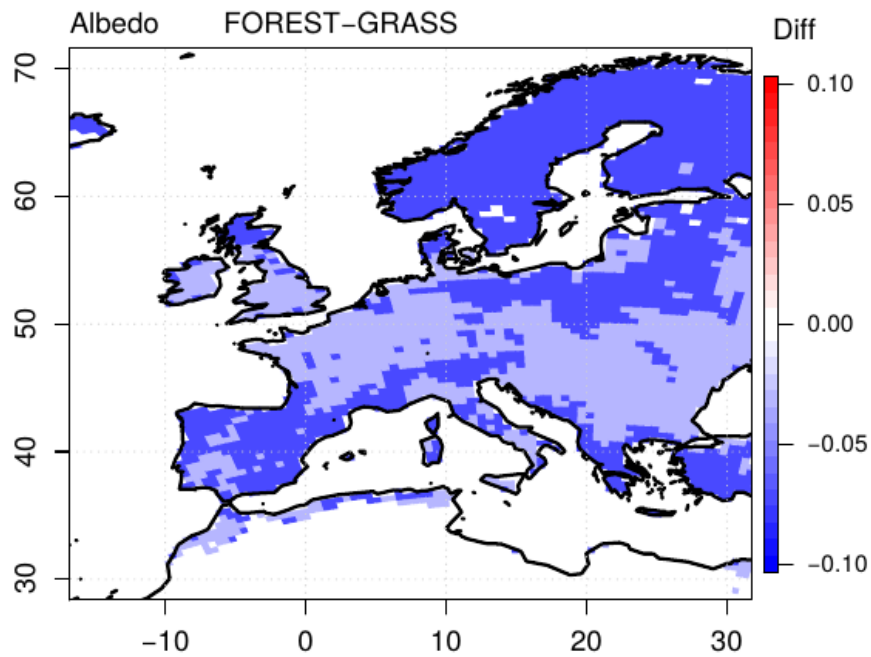


GRASS-Map

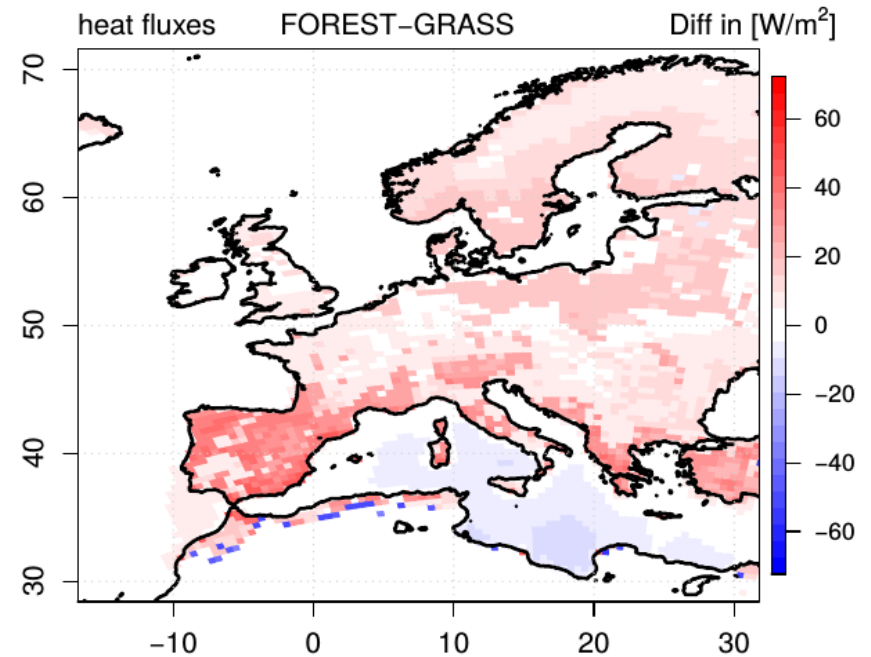
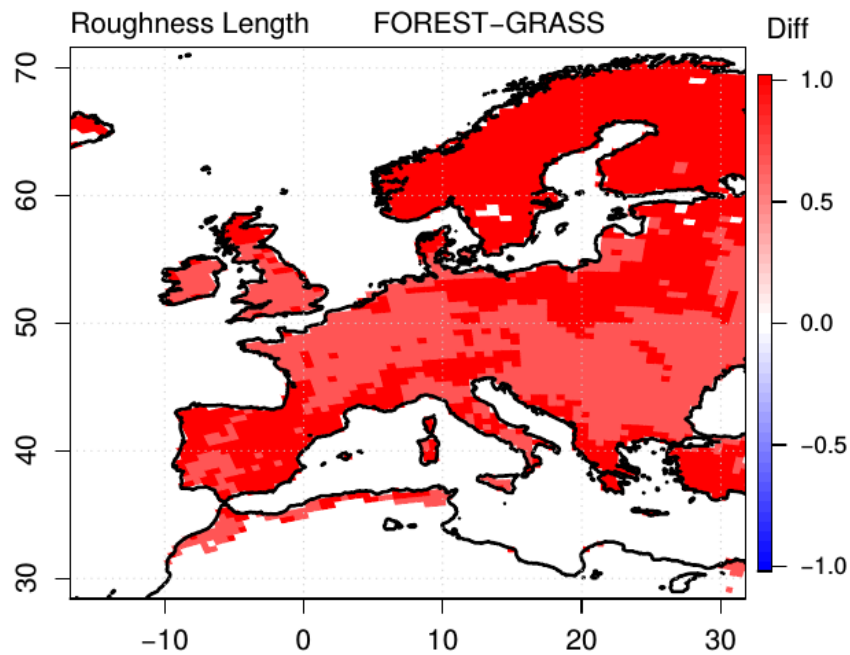


- shrubs
- grass
- crop
- cultivated areas
- mixed forest
- coniferous forest
- deciduous forest
- water
- artificial surfaces
- bare areas

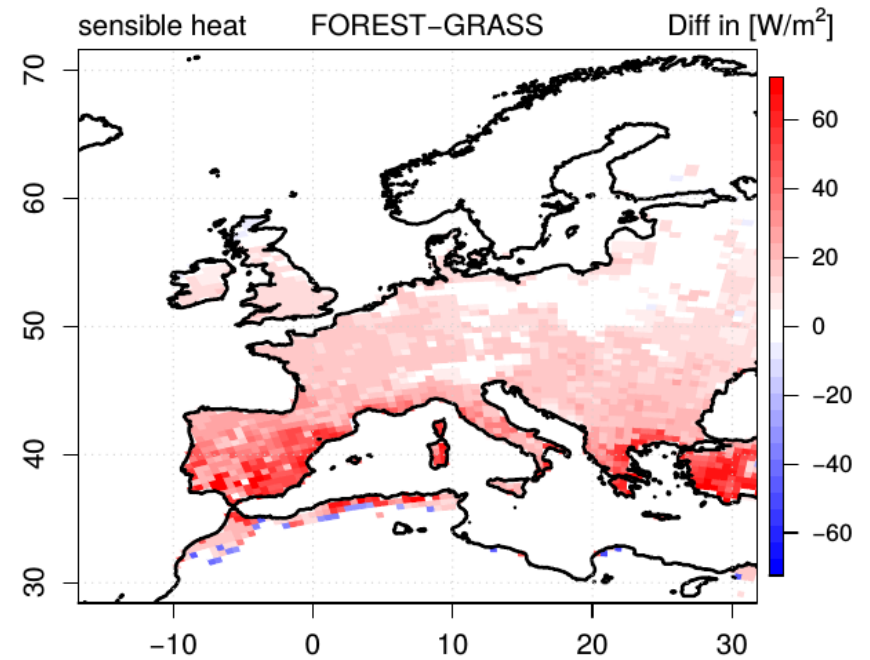
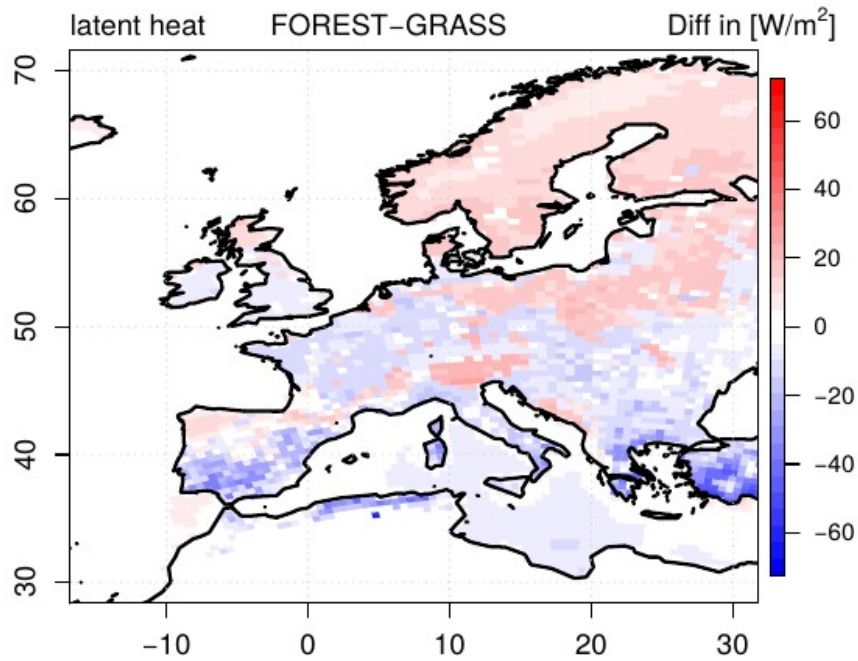
Radiation - Summer



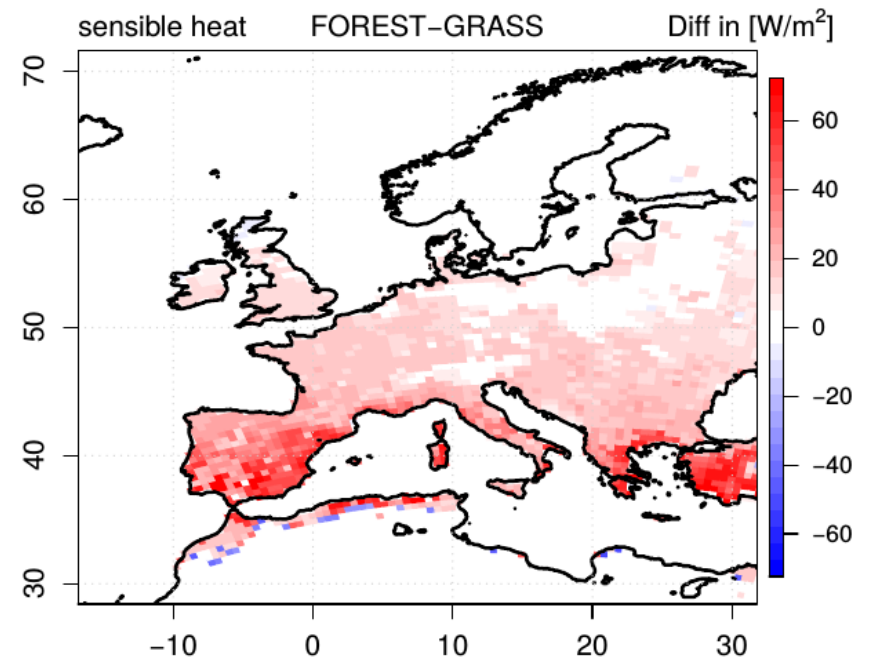
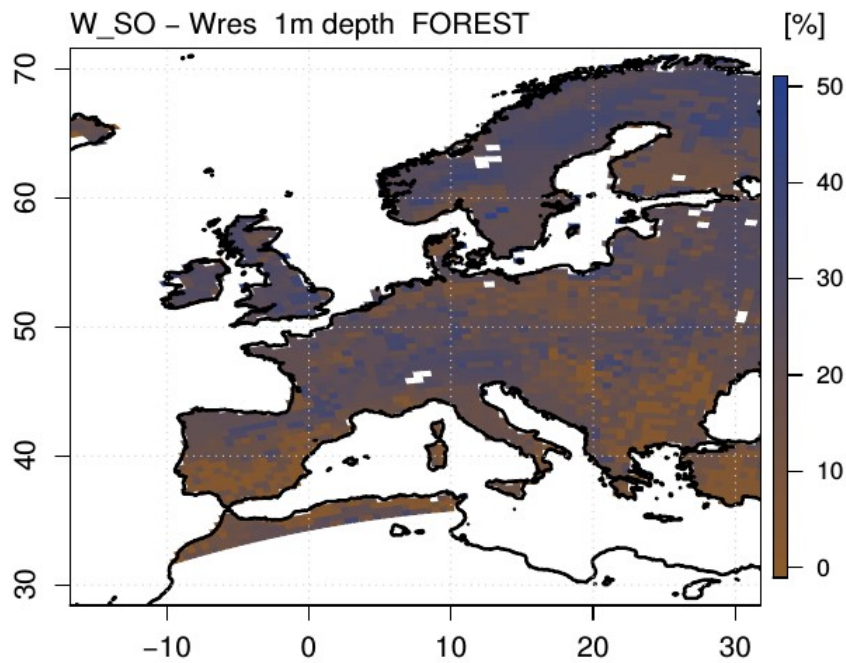
Roughness - Summer



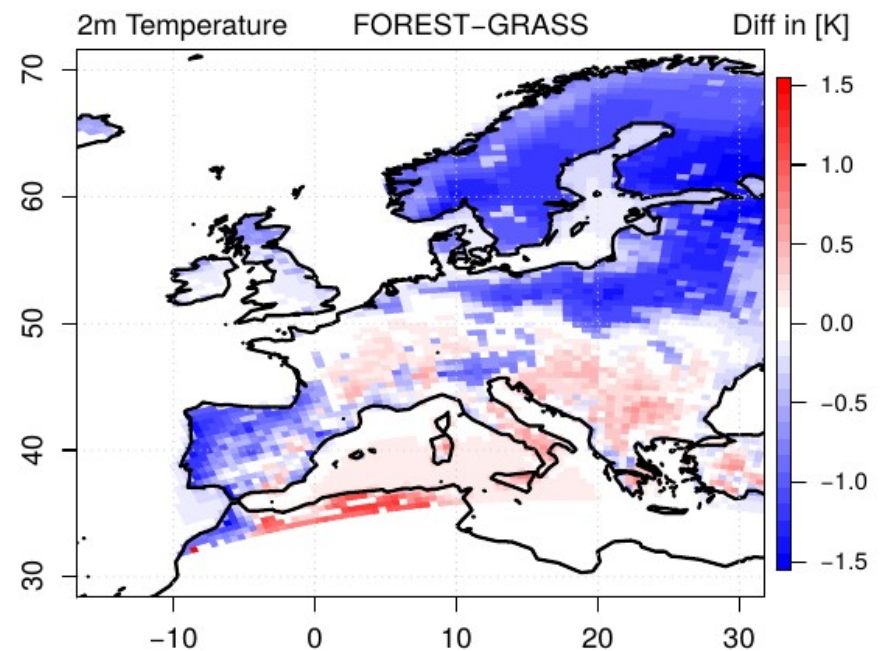
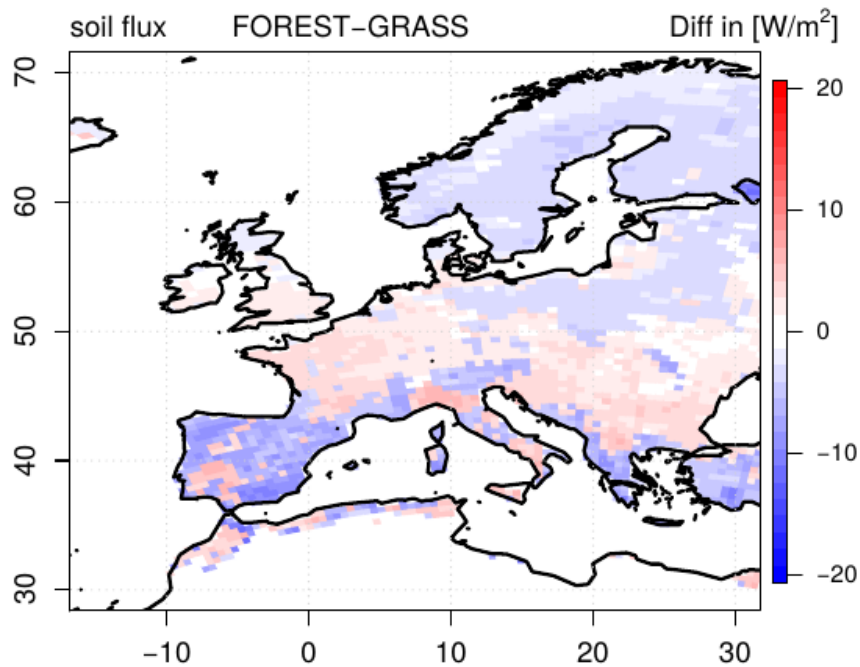
Turbulent Heat Fluxes - Summer



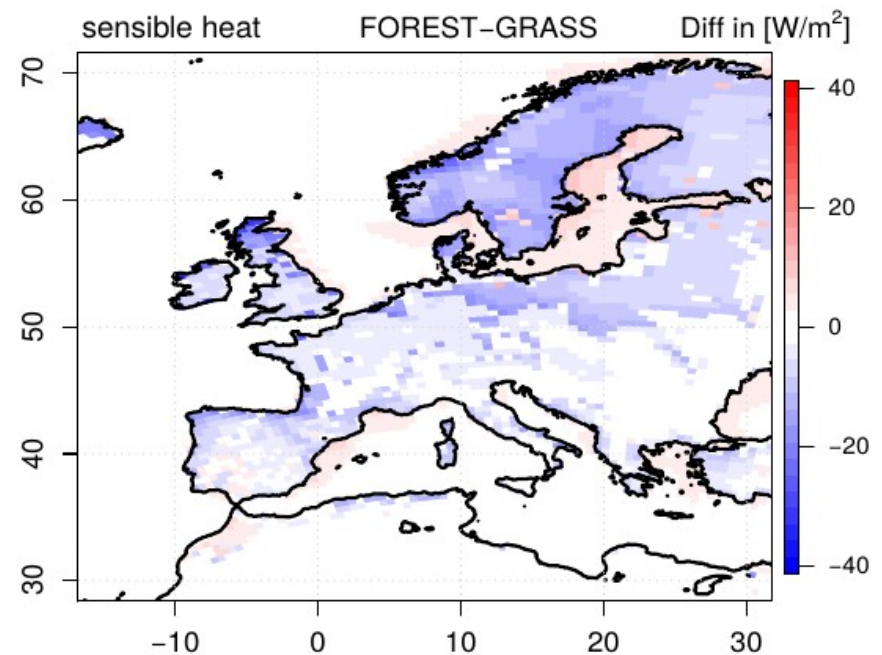
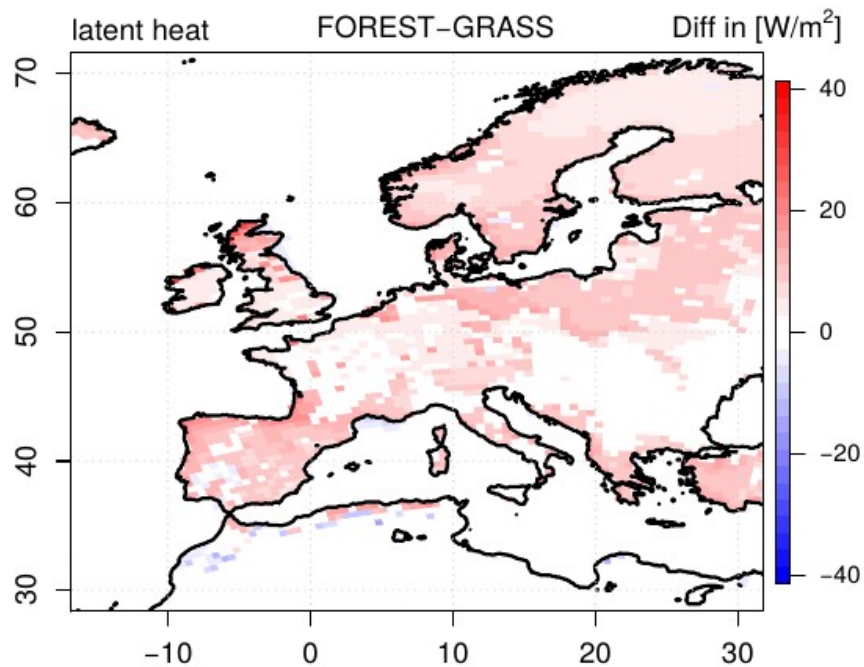
Soil Water Content - Summer



Near Surface Temperature - Summer



Near Surface Temperature - Winter



Near Surface Temperature - Winter

