



Schweizerische Eidgenossenschaft
Confédération suisse
Confederazione Svizzera
Confederaziun svizra

Swiss Confederation

Federal Department of Home Affairs FDHA
Federal Office of Meteorology and Climatology MeteoSwiss

On an improved snow analysis or about a not so tentative plan at MCH

Sascha Bellaire¹, Varun Sharma³, Louise Braud¹, Michael Lehning^{2,3}, Jean-Marie Bettems¹

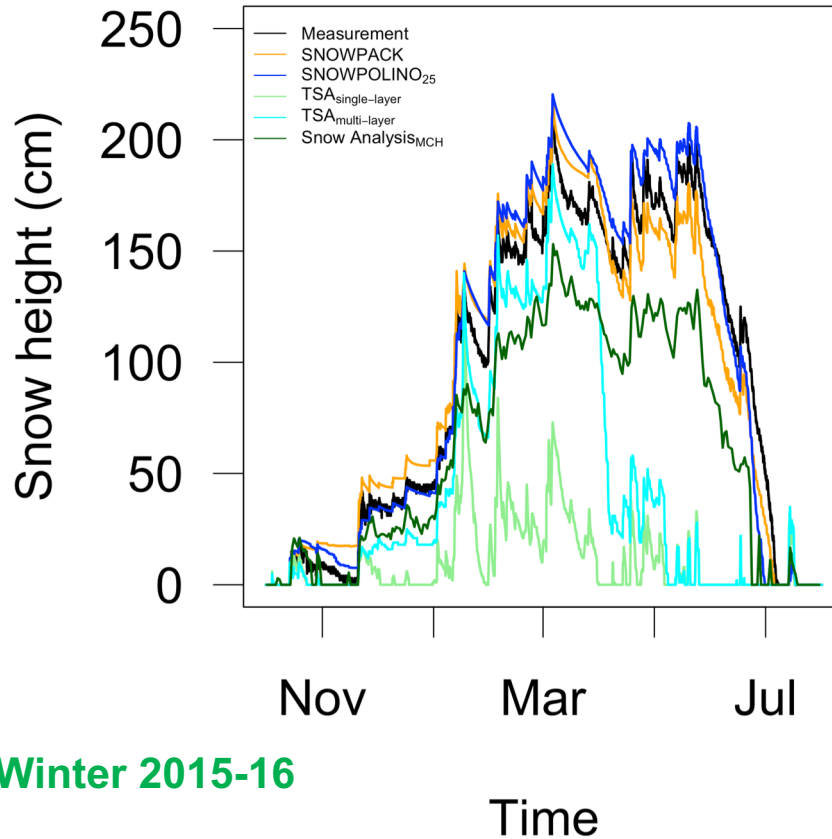
¹MeteoSwiss, Zurich, Switzerland

²WSL Institute for Snow and Avalanche Research SLF, Davos, Switzerland

³CRYOS, School of Architecture, Civil and Environmental Engineering, EPFL, Lausanne, Switzerland

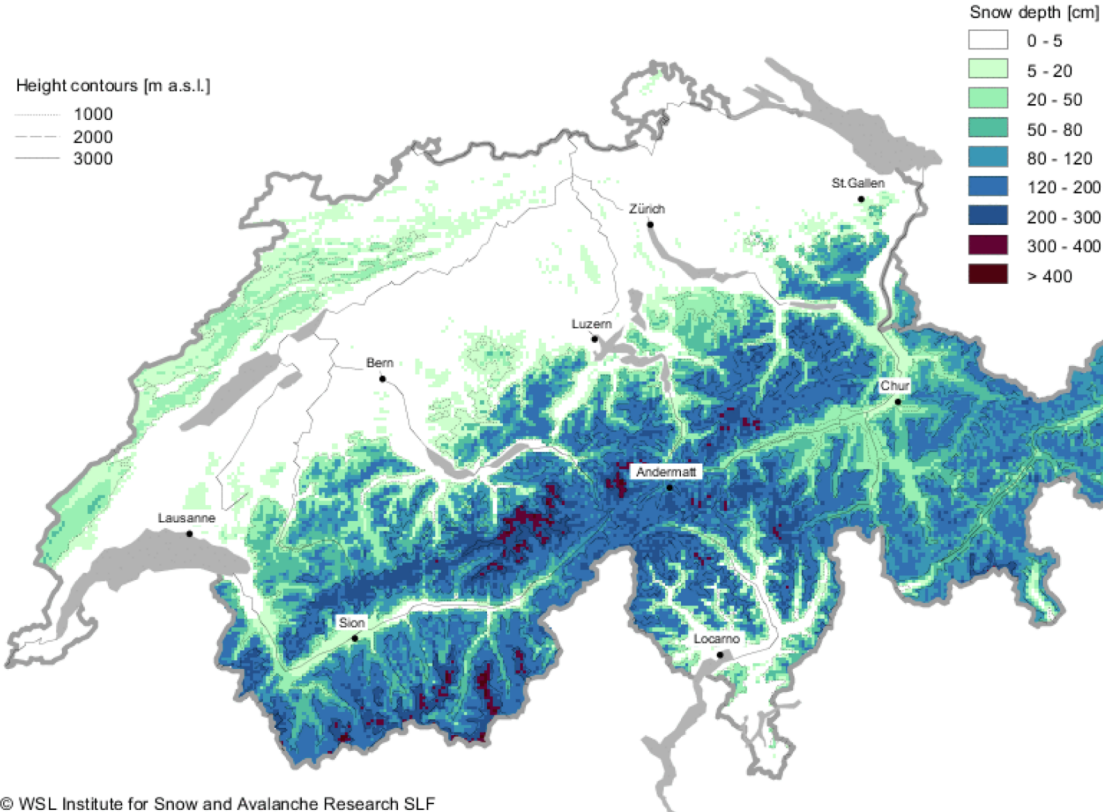


Snow height (local) - Model results



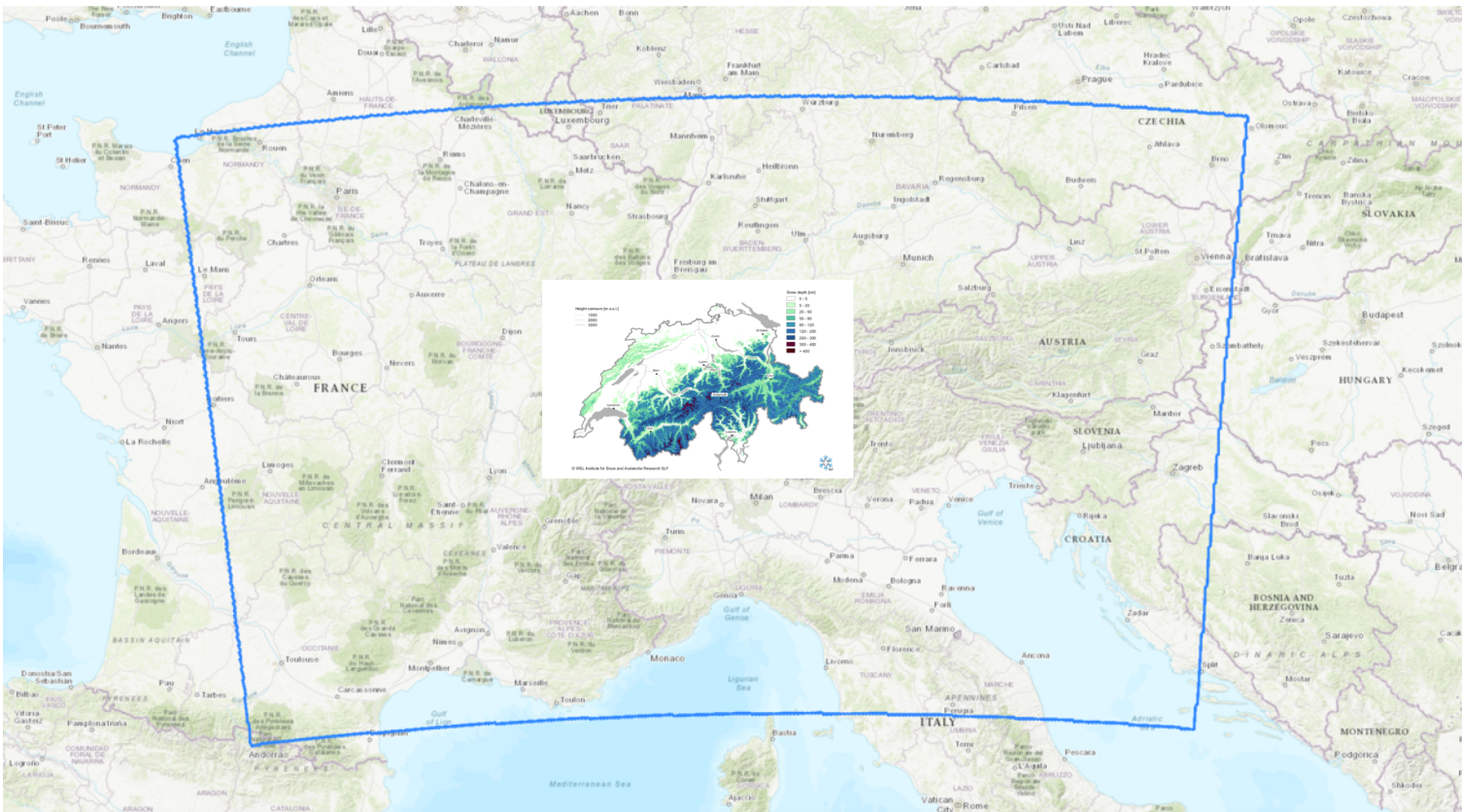


Snow Analysis – What do we need?





Snow Analysis – What do we need?





Snow Analysis – How do we get there?

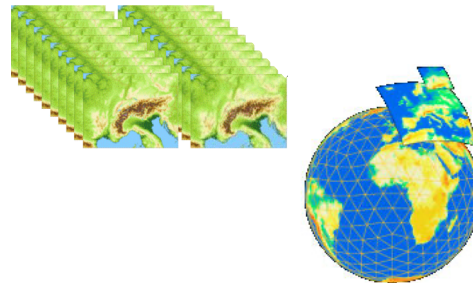
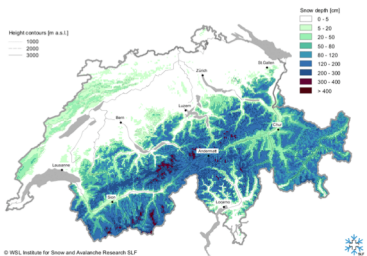
Product



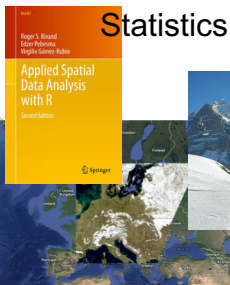
Processing



NWP model



COSMO First Guess



Statistics



Satellite Imagery



AWS Data



Snow Analysis – How do we get there?

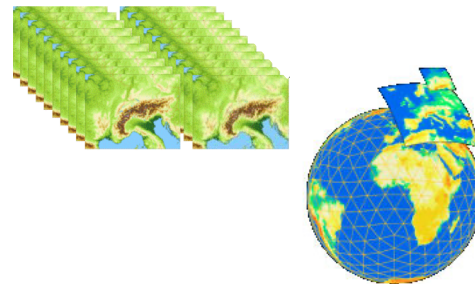
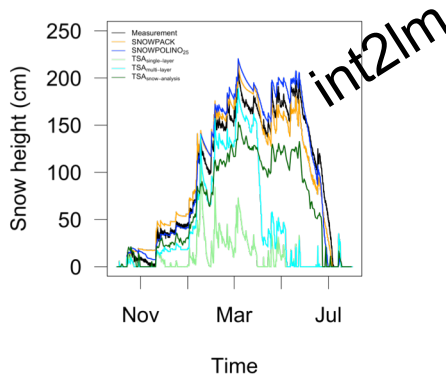
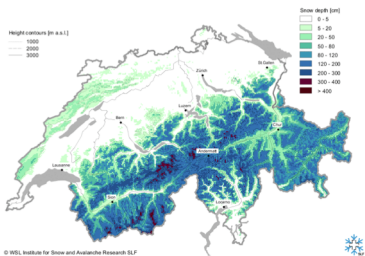
Product



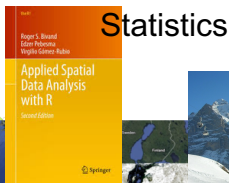
Processing



NWP model



COSMO First Guess



Statistics



Satellite Imagery



AWS Data



Snow Analysis – How do we get there?

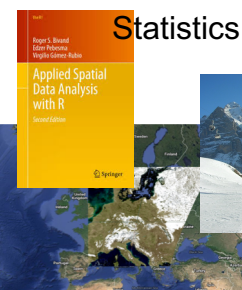
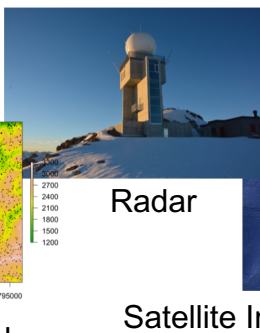
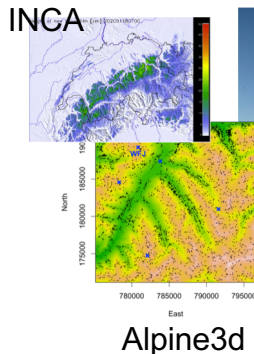
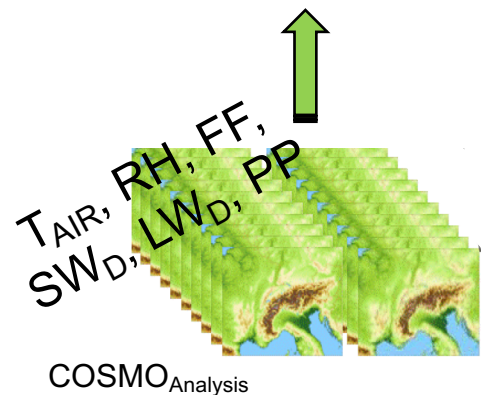
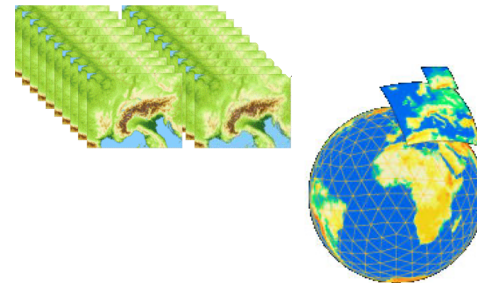
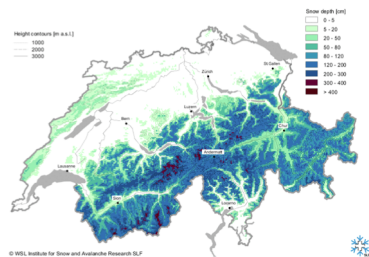
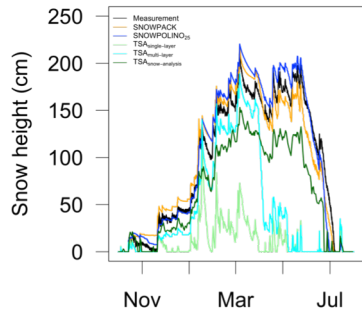
SNOWPOLINO



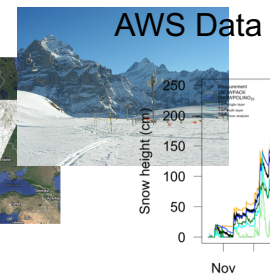
Product



NWP model



Statistics





Schweizerische Eidgenossenschaft
Confédération suisse
Confederazione Svizzera
Confederaziun svizra

Swiss Confederation

Federal Department of Home Affairs FDHA
Federal Office of Meteorology and Climatology MeteoSwiss

Thank you!

Questions or Comments?

Sascha Bellaire, Louise Braud, Michael Lehing, Jean-Marie Bettems

Contact: sascha.bellaire@meteoswiss.ch