



# PP CITTA'

**Massimo Milelli, Francesca Bassani, Valeria Garbero**

**7 July 2022**

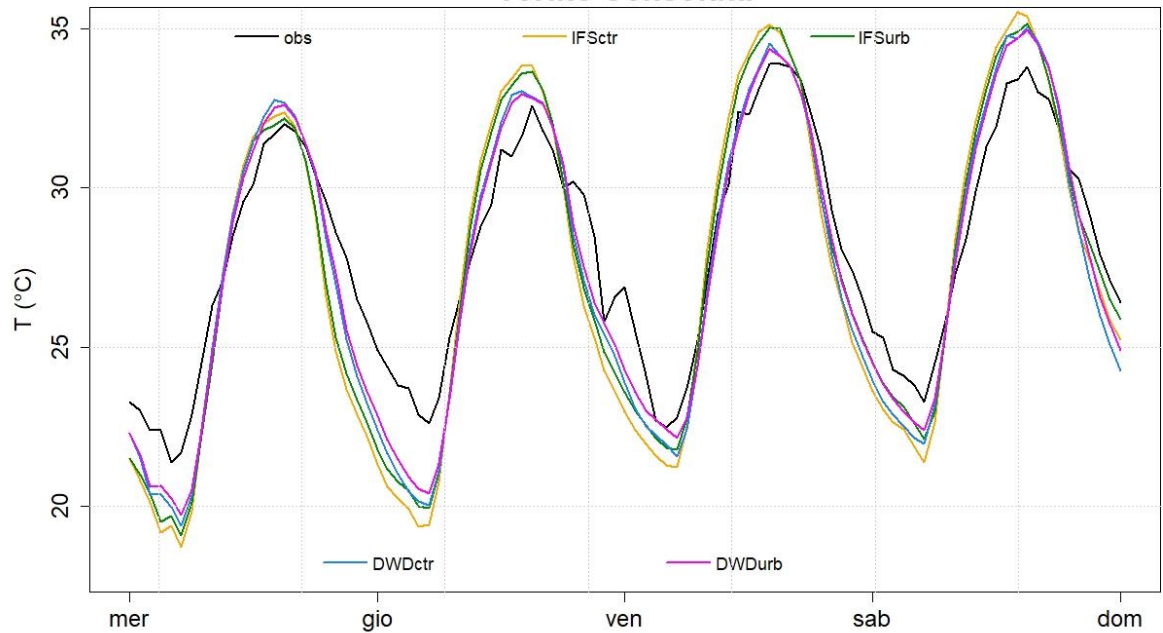
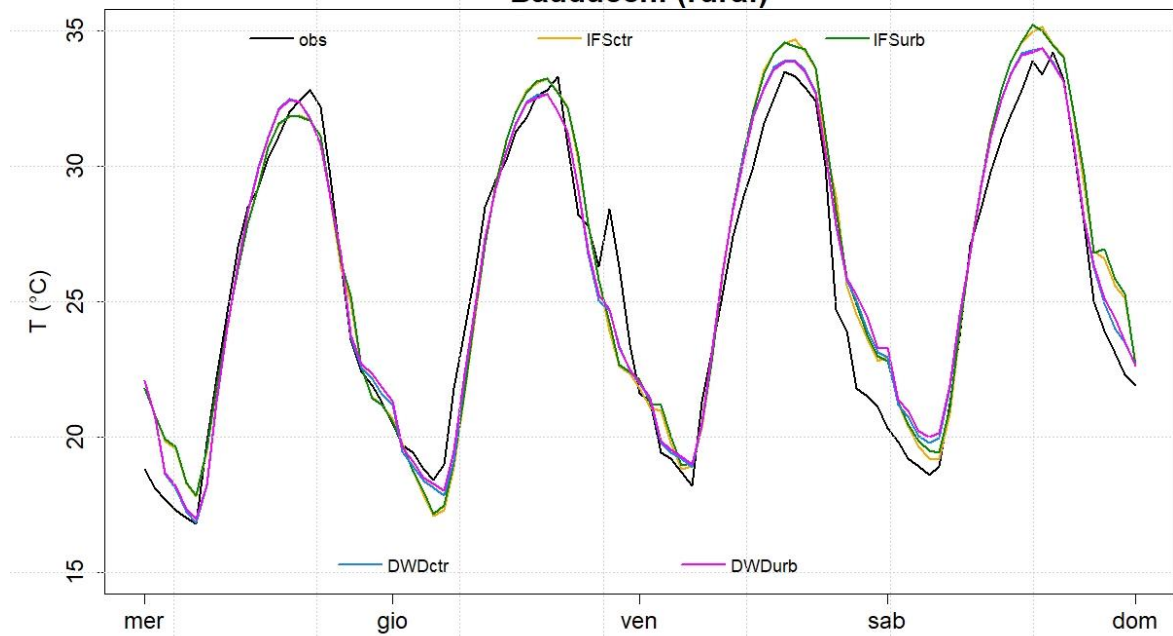
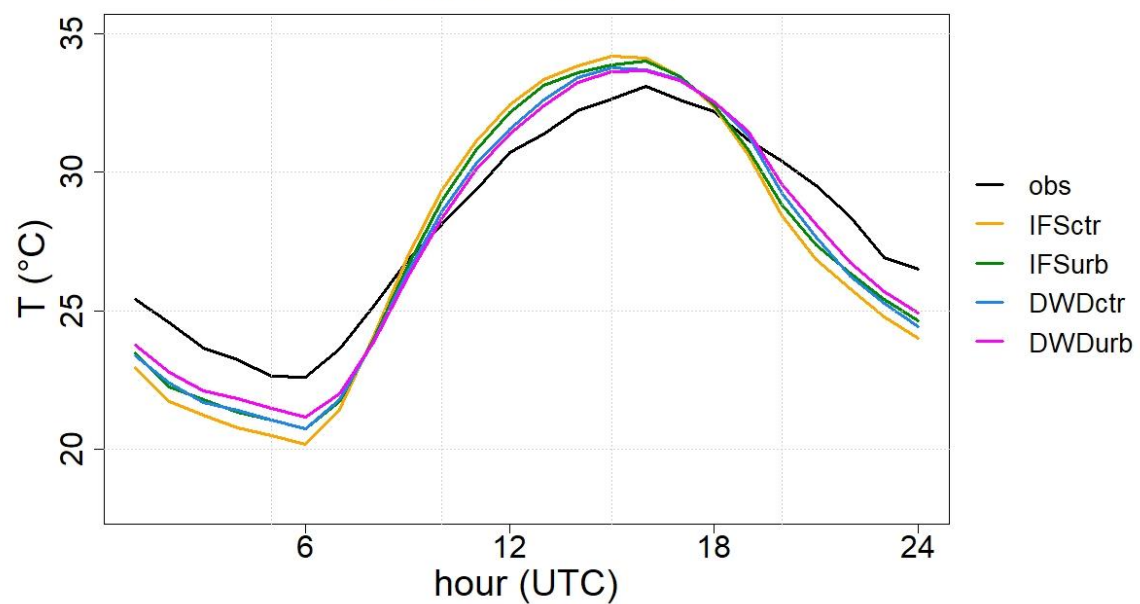
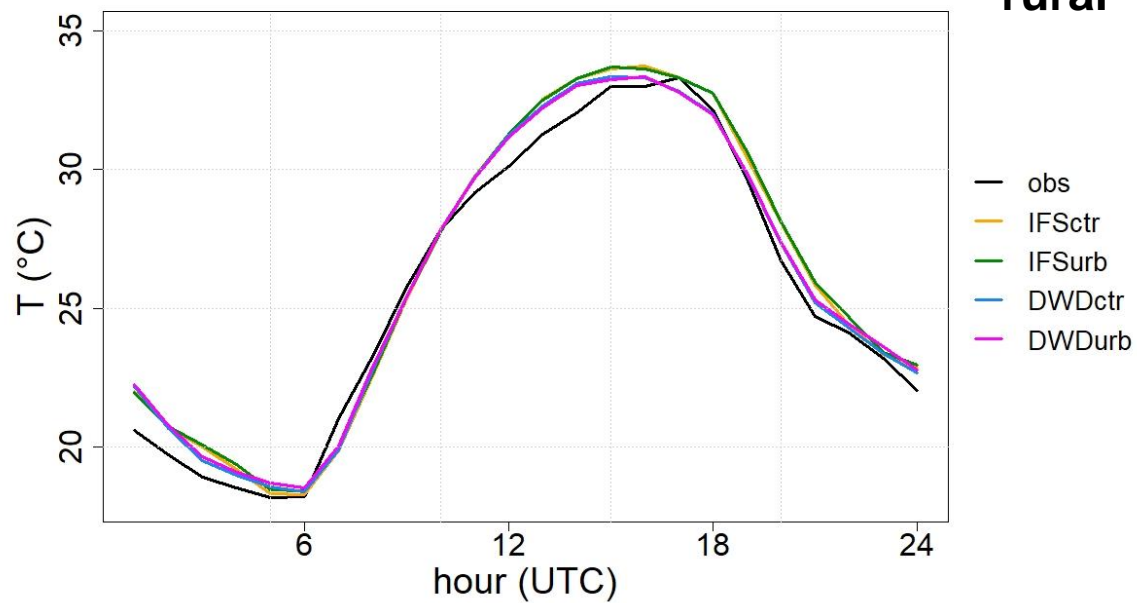
[www.cimafoundation.org](http://www.cimafoundation.org)



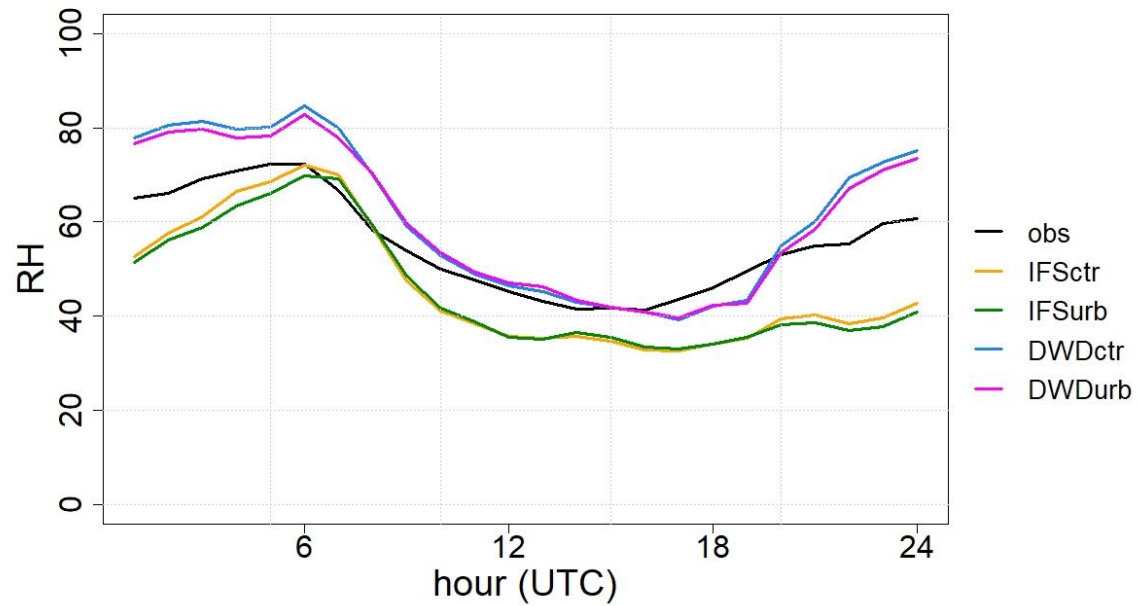


## Hindcast simulation:

- 2021081100 – 2021081500 (96h)
- Heat wave over north-west of Italy
- IFS 9km -> ICON 900m
- ICON 7km -> ICON 3.5km -> ICON 1.8km -> ICON 900m
- ICON v2.6.4 (master) with TU and KBMO

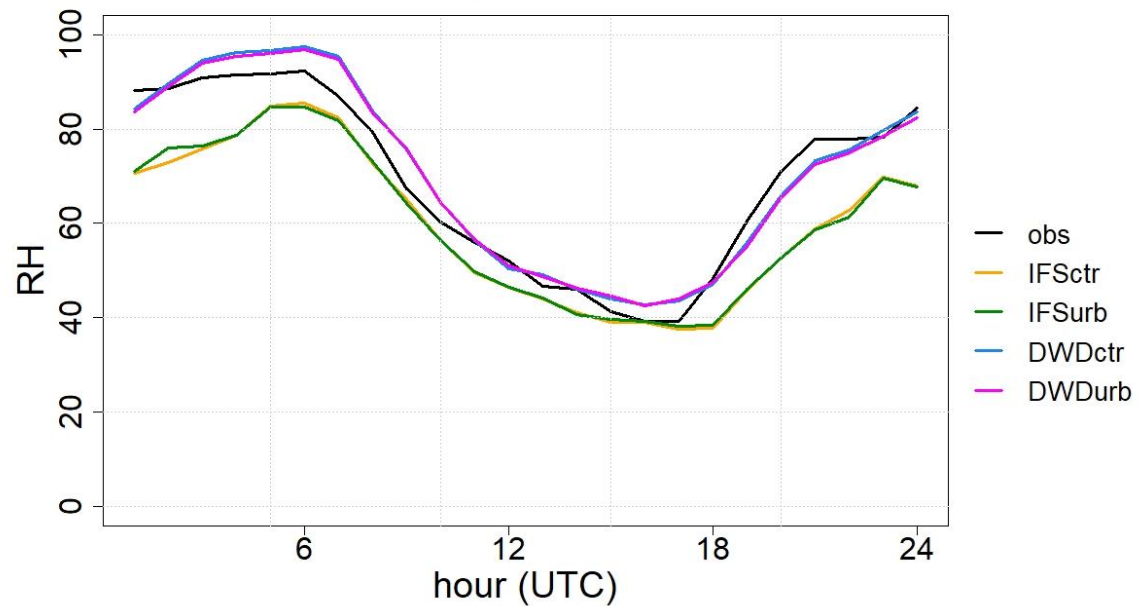
**Torino Consolata****Bauducchi (rural)****urban****Torino Consolata****Bauducchi (rural)****rural**

Torino Consolata



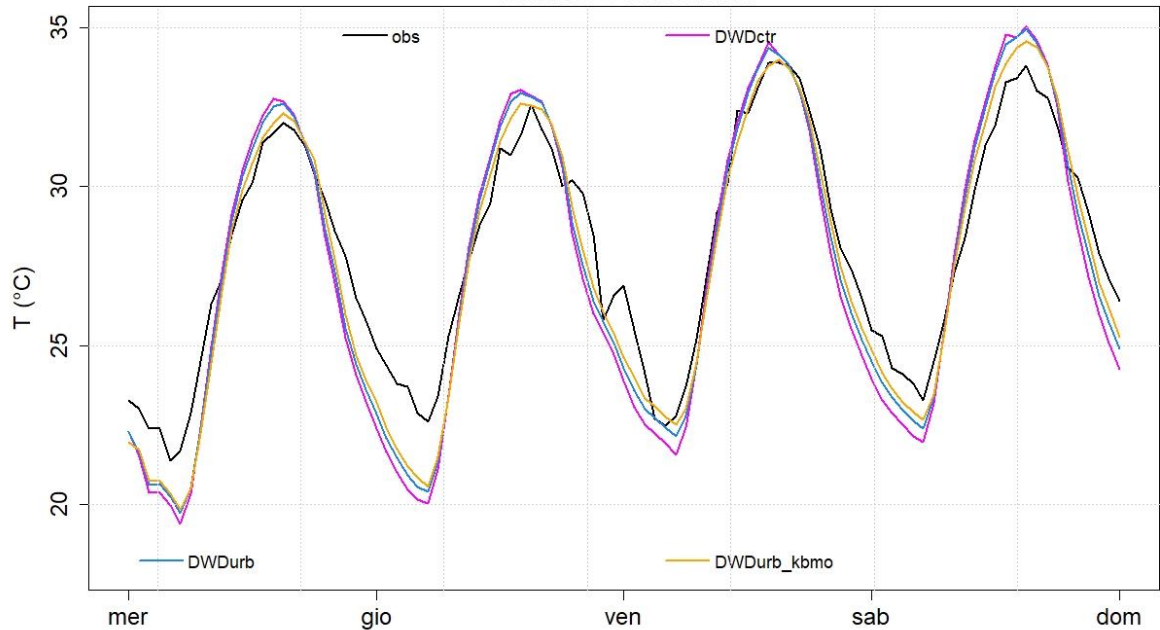
urban

Bauducchi

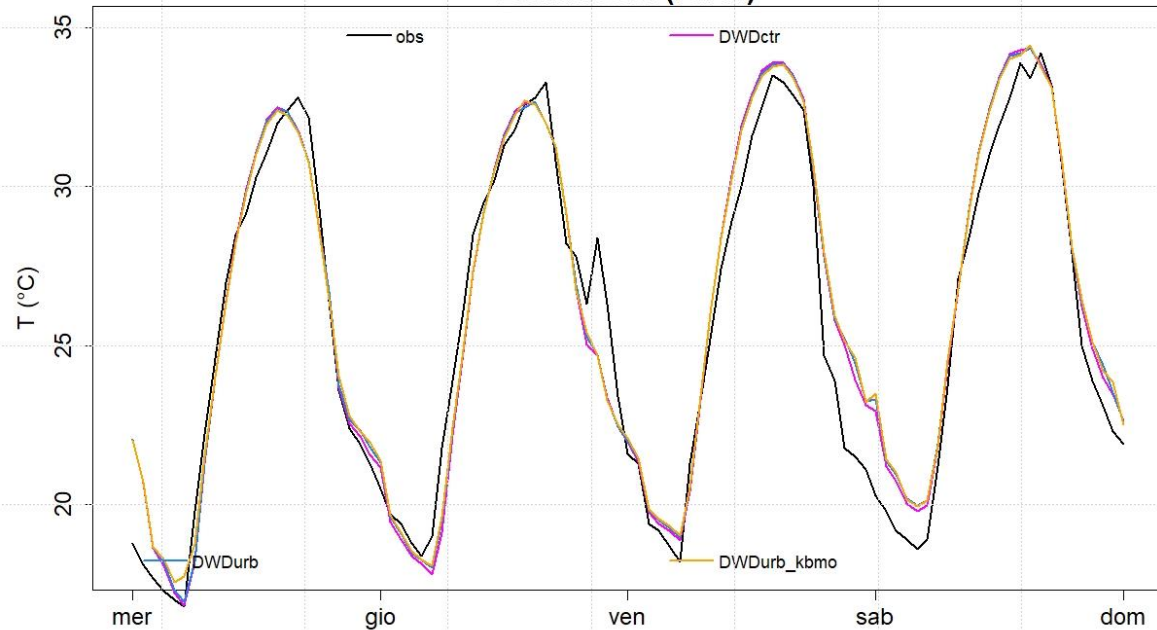


rural

### Torino Consolata

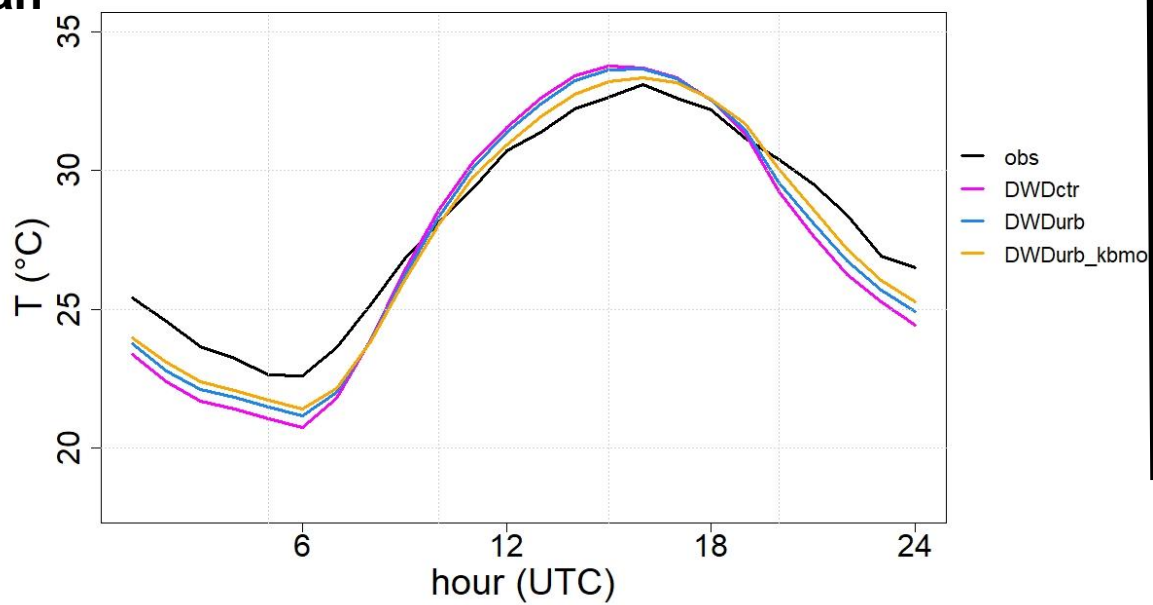


### Bauducchi (rural)



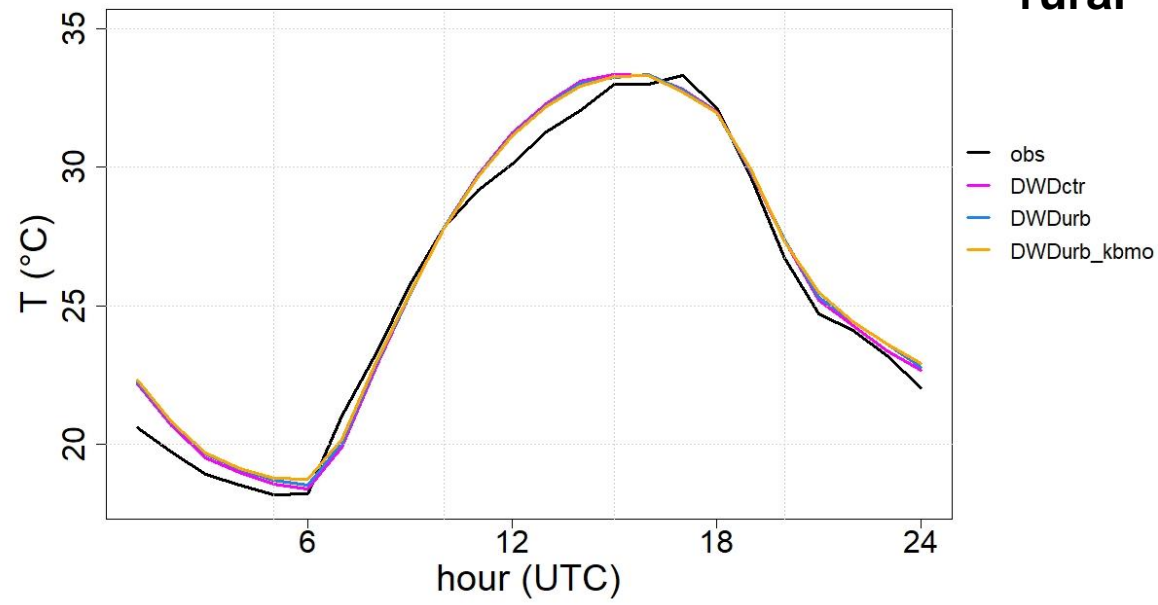
**urban**

### Torino Consolata

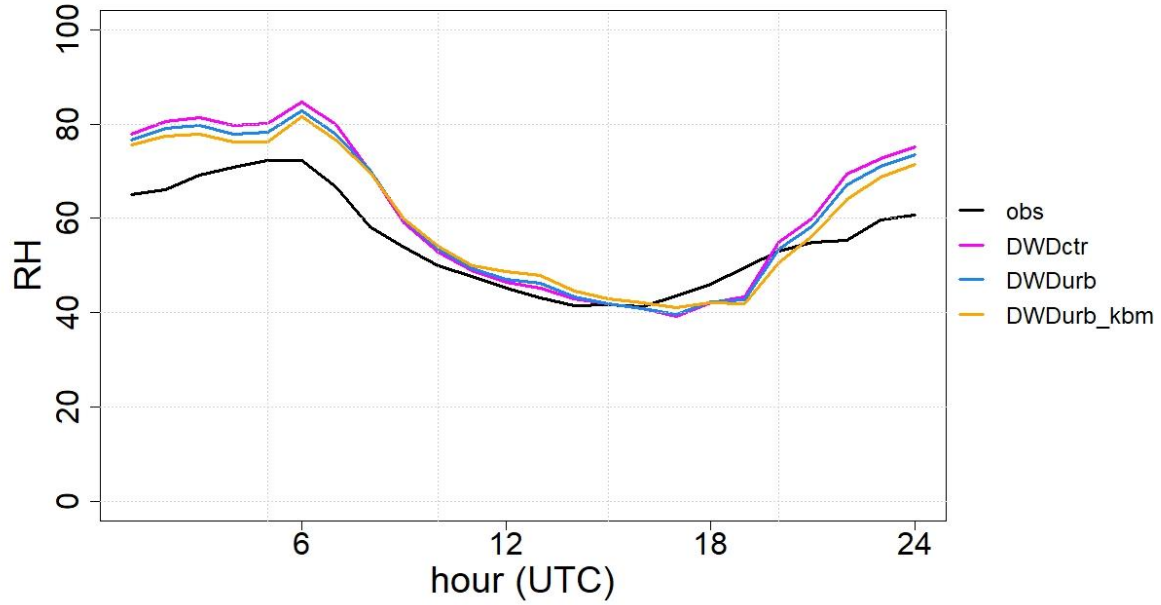


### Bauducchi (rural)

**rural**

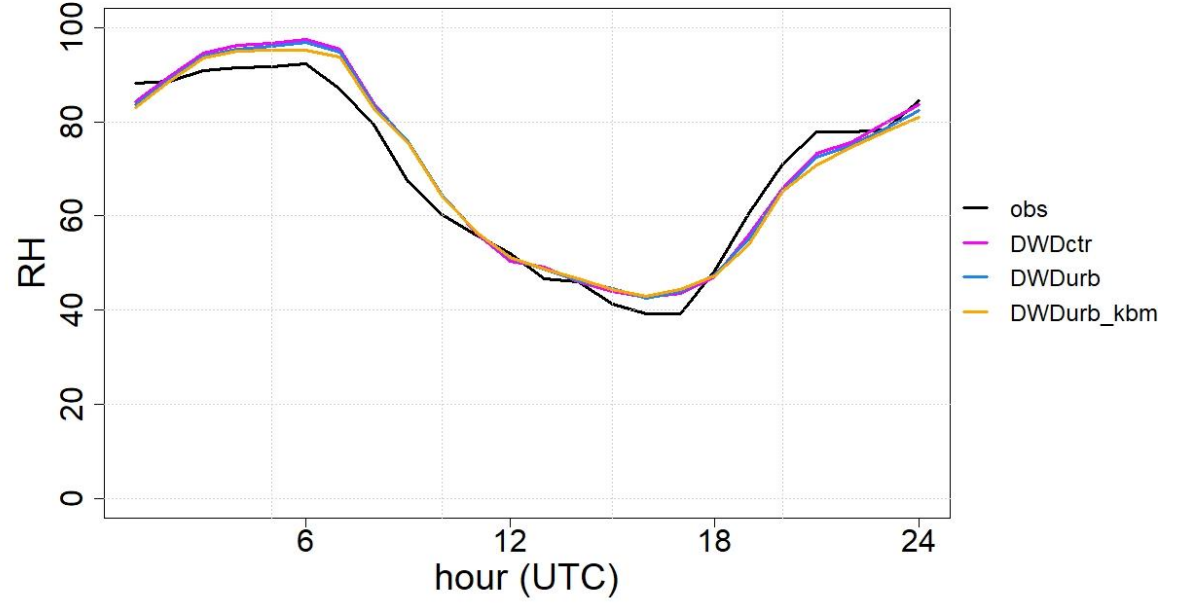


Torino Consolata



urban

Bauducchi (rural)



rural

+1°C

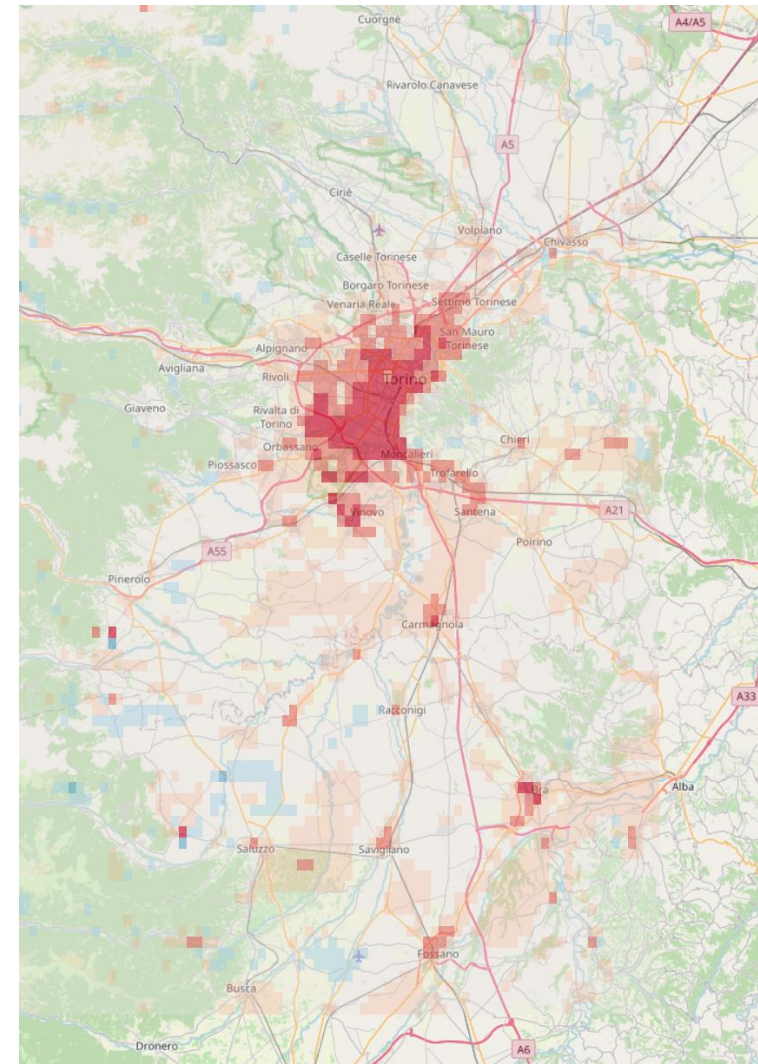
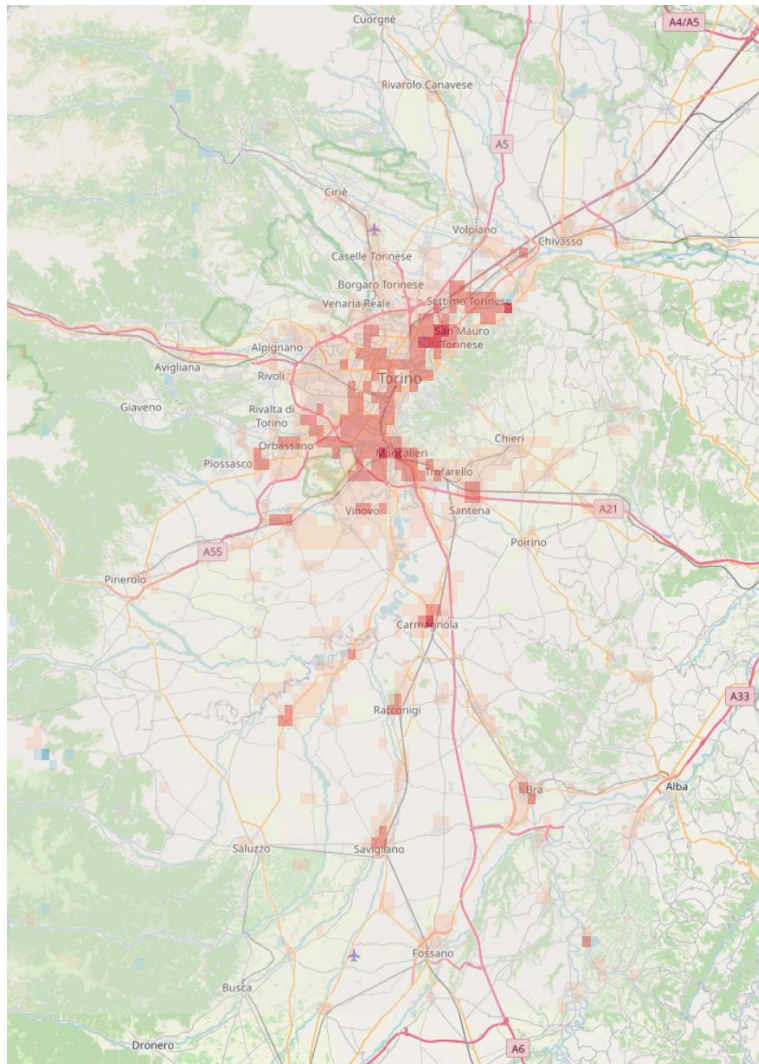
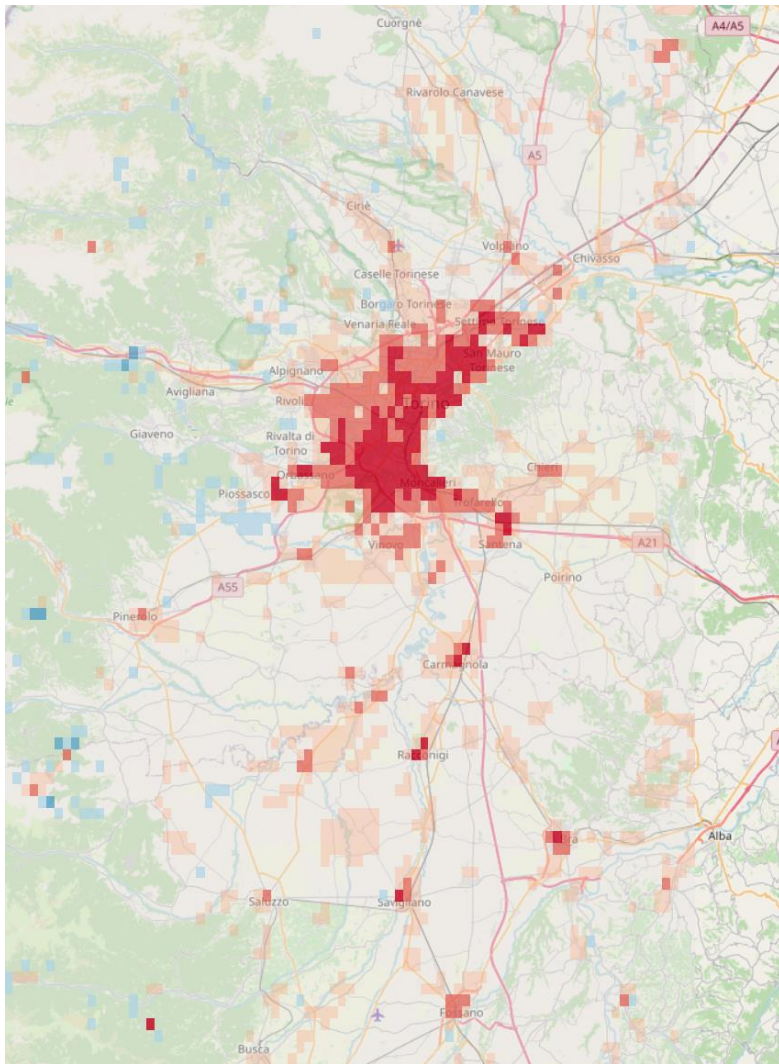
20220814 05UTC

DWD-KBMO

DWD

IFS

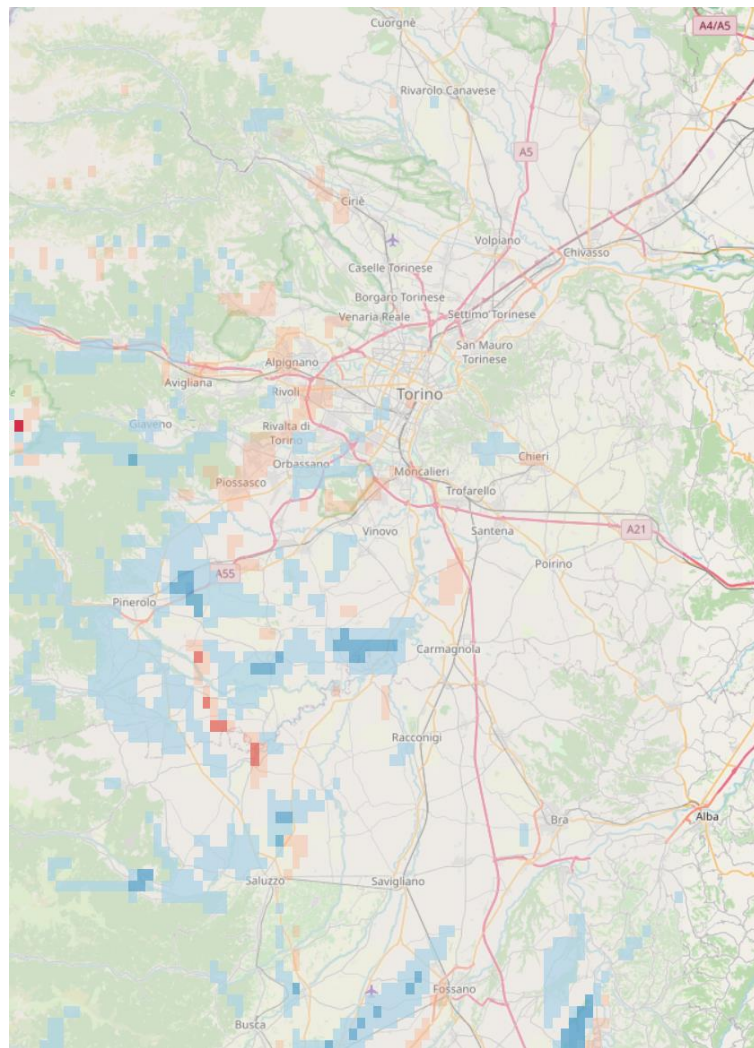
0°C



-1°C

+1°C

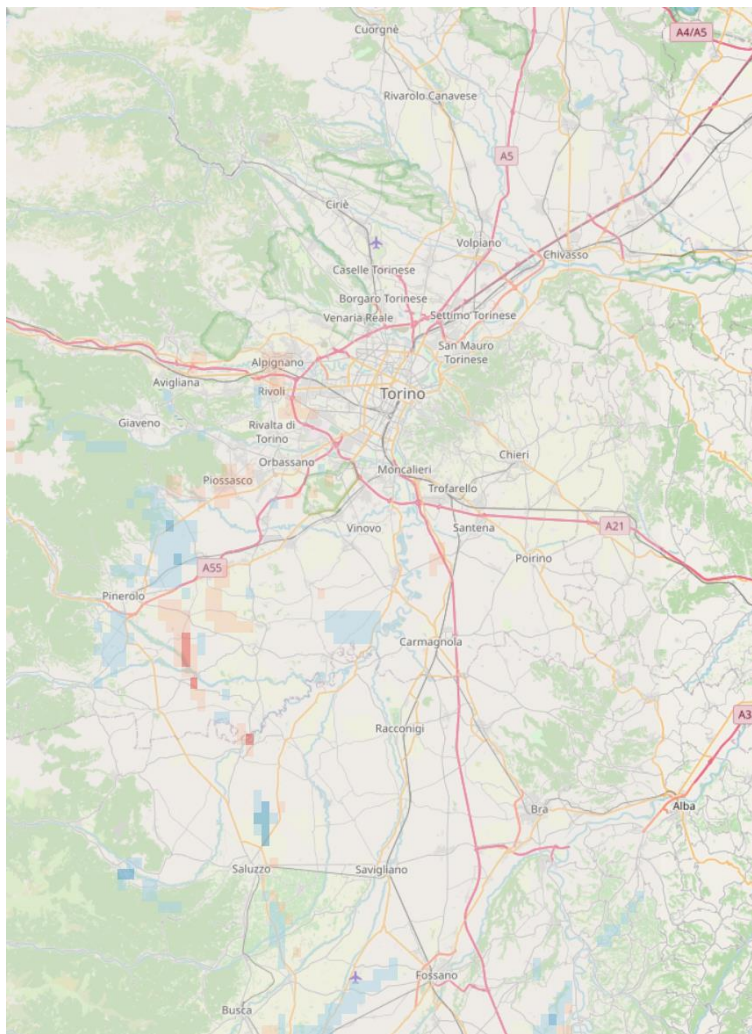
DWD-KBMO



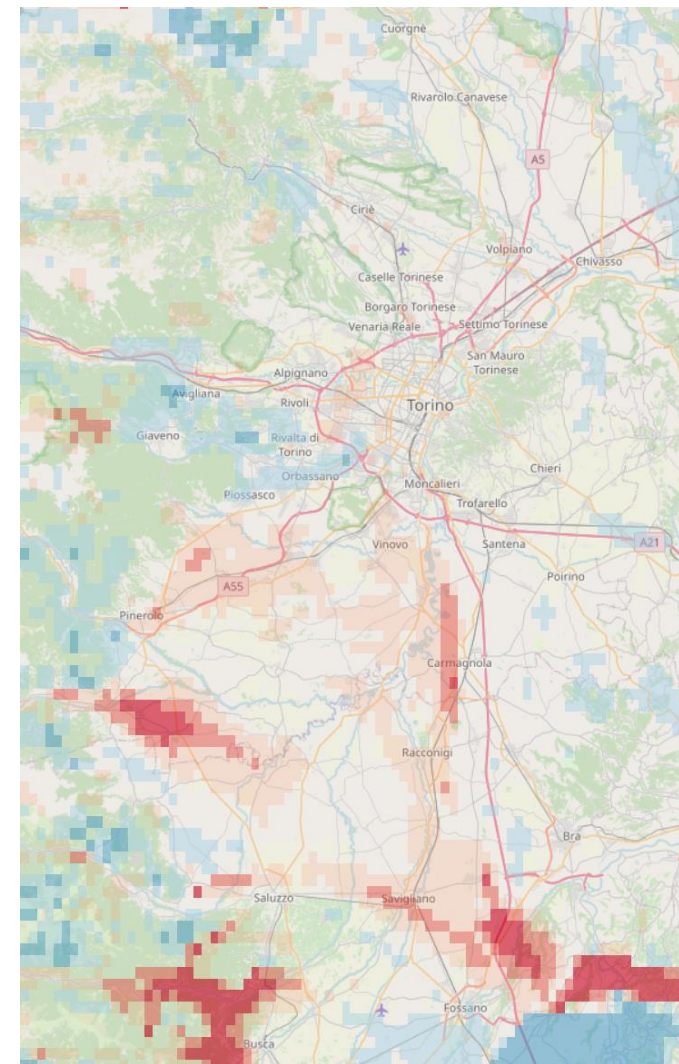
0°C

20220813 17UTC

DWD

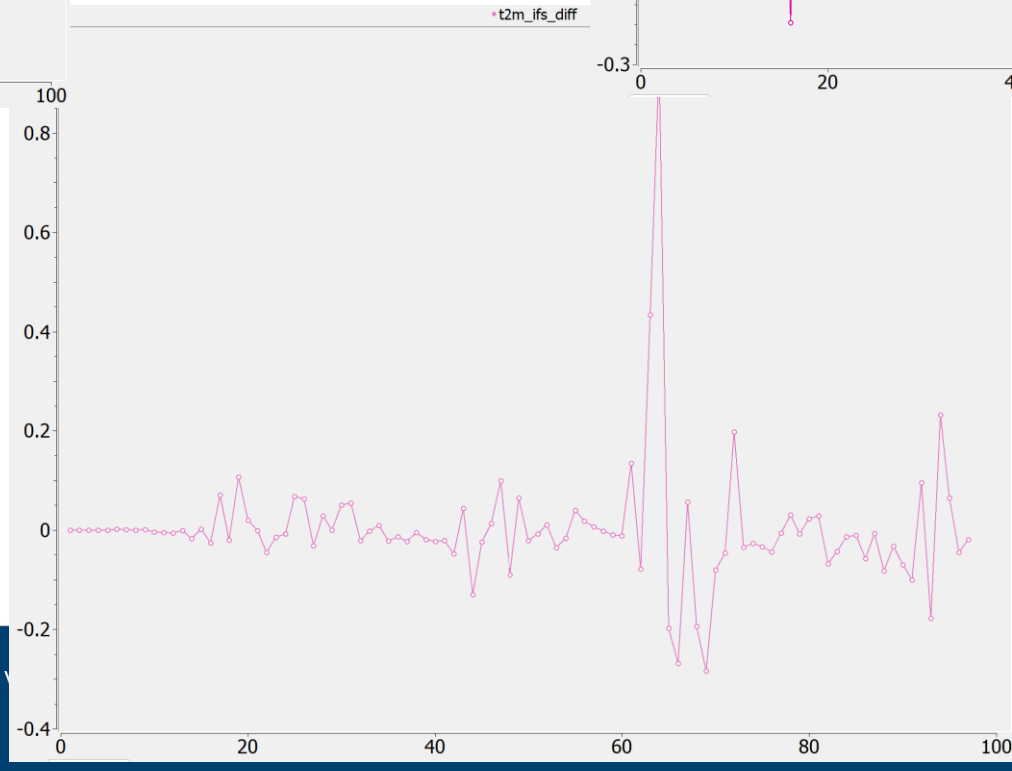
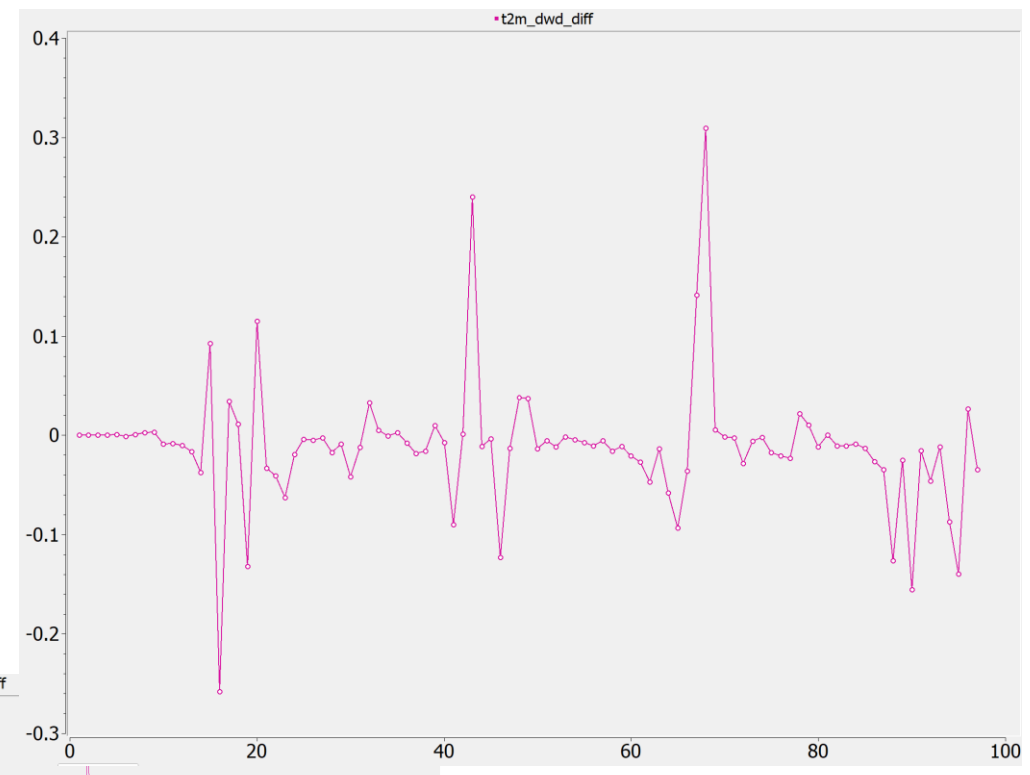
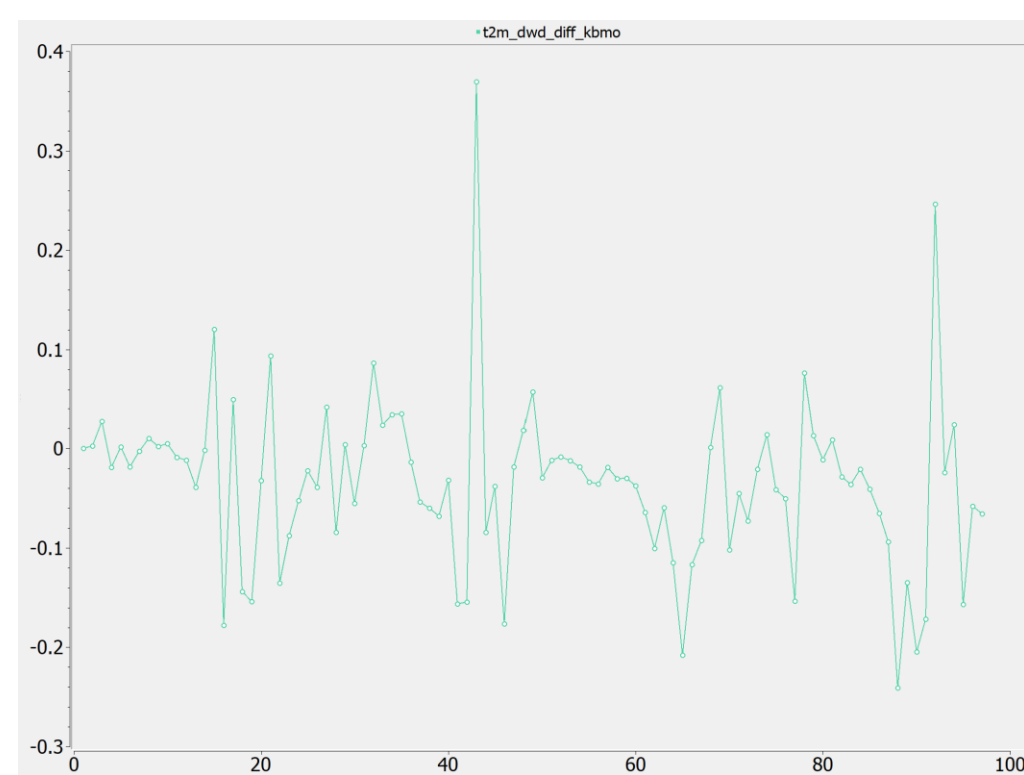


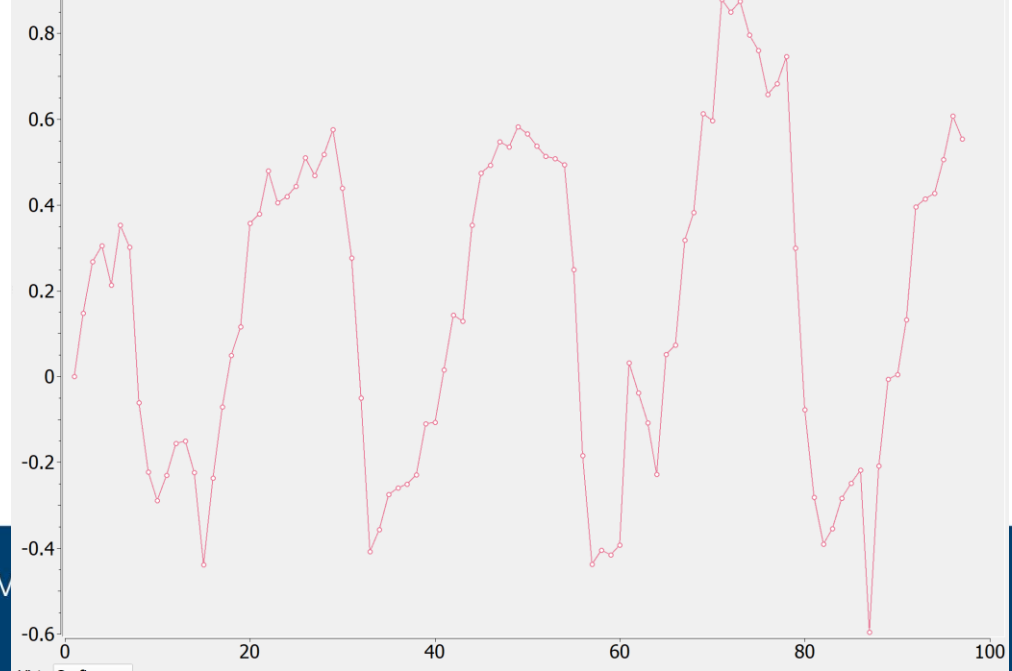
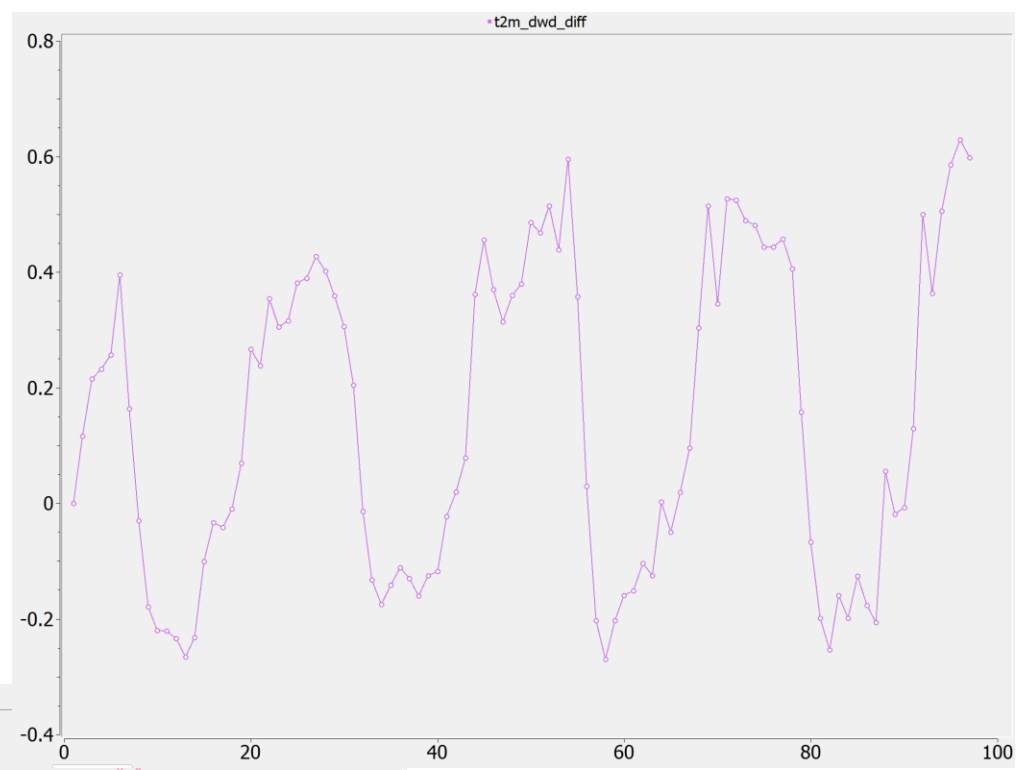
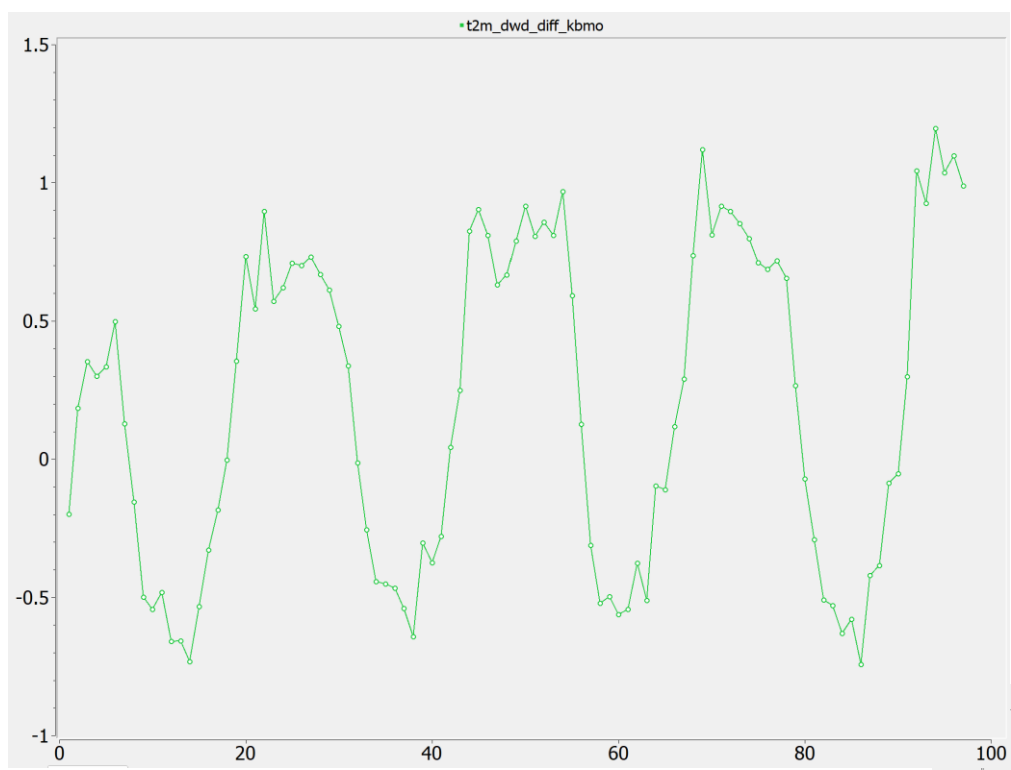
IFS



-1°C







- Some unrealistic spatial pattern with IFS ICs/BCs
- Also with ICON ICs/BCs, although much more reasonable

Next steps:

- IFS ICs/BCs with ICON soil variables
- Is the namelist reasonable or does it need changes ?
- What about tiles ?



[info@cimafoundation.org](mailto:info@cimafoundation.org)

[www.cimafoundation.org](http://www.cimafoundation.org)