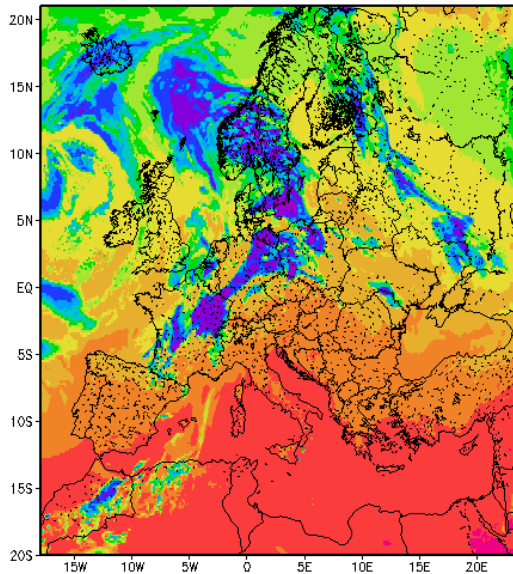


Synthetic Satellite Images from the COSMO-Model

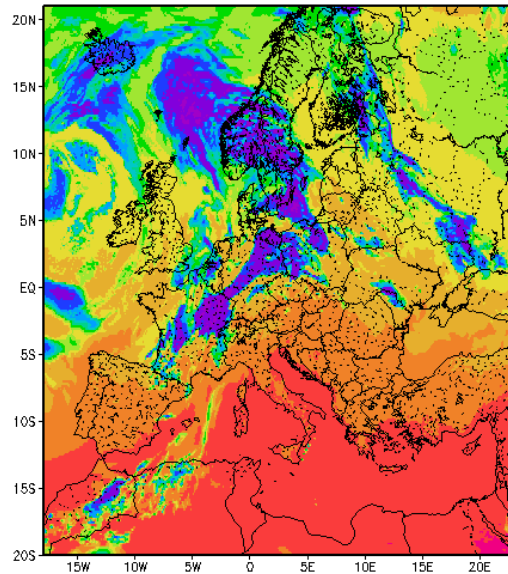
- Three different versions of the RTTOV-library can now be used in the COSMO-Model: RTTOV7, RTTOV9, RTTOV10
- The library has to be chosen at compile time with an appropriate `-DRTTOVx` ($x \in \{7, 9, 10\}$)
- And it has to be specified for the model run with `itype_rttov = x`
- If RTTOV10 is used, the model can now also process satellite observations from `sat_pp` files (for data assimilation).

Brightness Temperatures for clear sky conditions computed with

RTTOV7



RTTOV9



RTTOV10

