



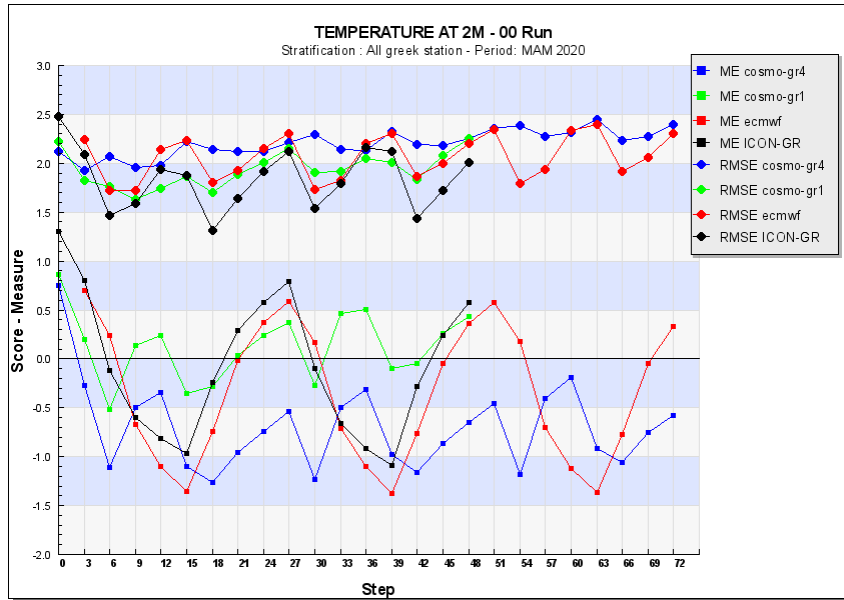
ΕΘΝΙΚΗ  
**ΜΕΤΕΩΡΟΛΟΓΙΚΗ**  
ΥΠΗΡΕΣΙΑ

HELLENIC NATIONAL METEOROLOGICAL SERVICE

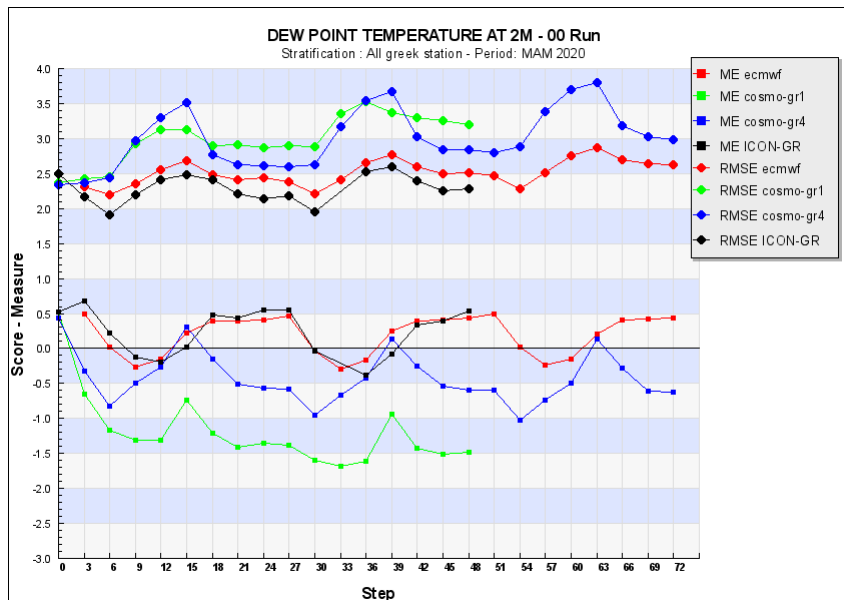


## **ICON-GR (2.5km) Performance**

- **MAM Verification over Greek domain  
(with VERSUS software)**
- **Summer test Case of Precipitation**

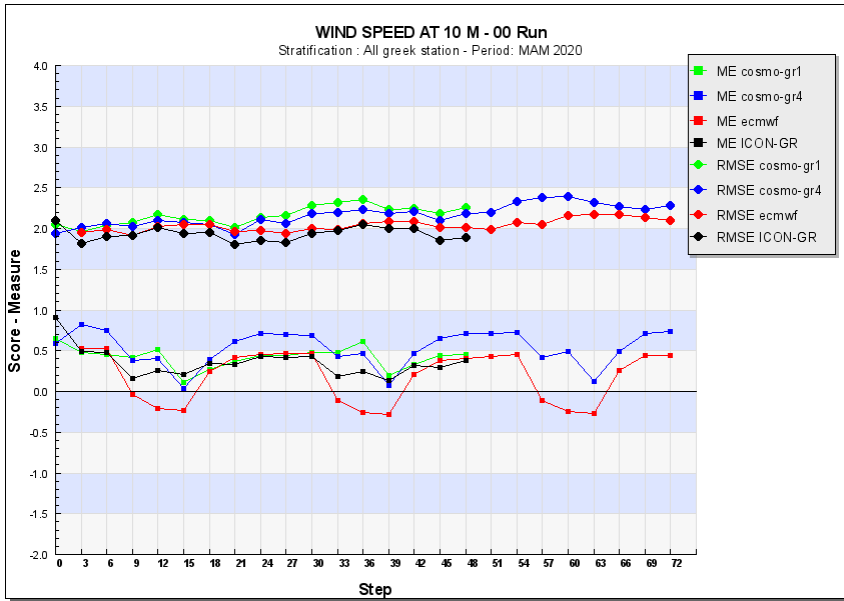


**T2m:** ICON bias diurnal cycle similar to IFS- slight overestimation night – underestimation noon. ICON RMSE variable with time and lower than COSMO models



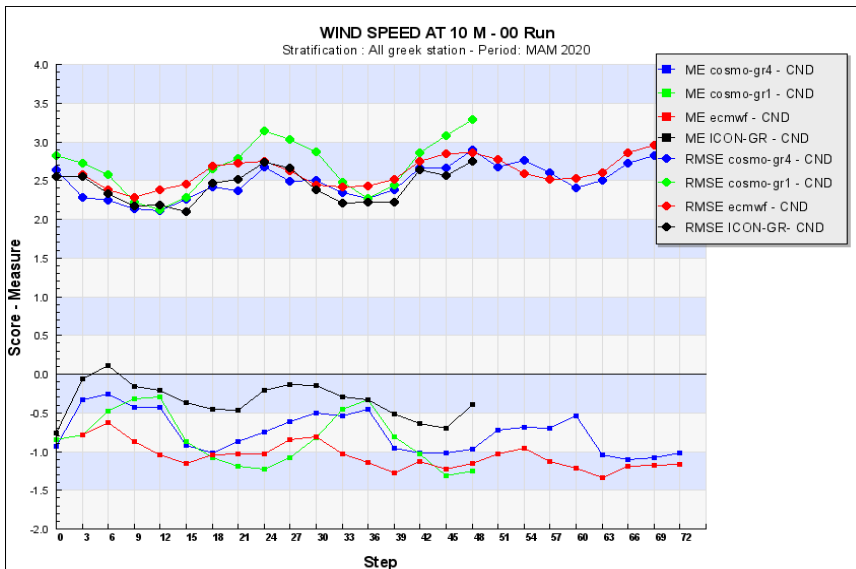
**Td2m:** Bias diurnal cycle similar to IFS , slight overestimation night – close to zero noon. ICON RMSE lower than COSMO models

ICON  
IFS-ECMWF  
COSMO4  
COSMO1



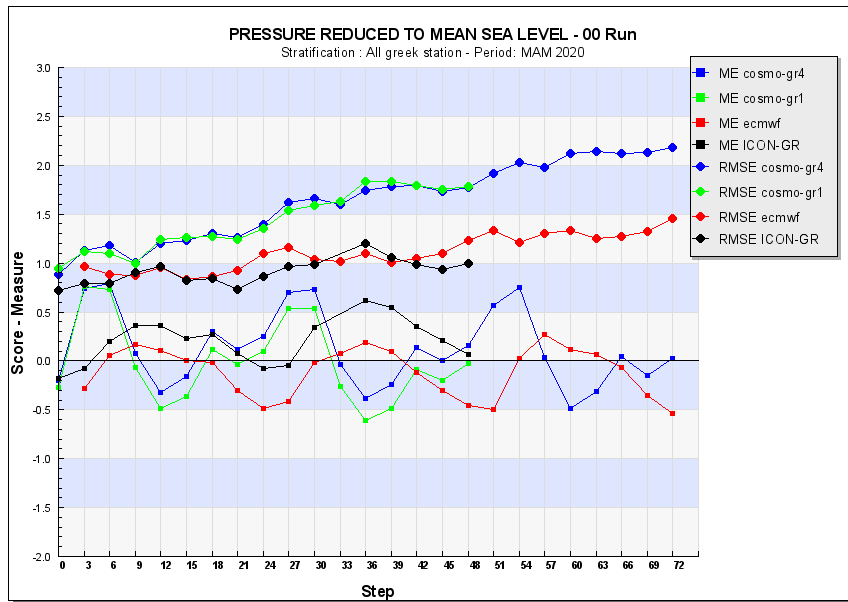
**WS 10m (all values):** ICON bias similar diurnal cycle with COSMO, slight overestimation especially night.

ICON RMSE lower than other models

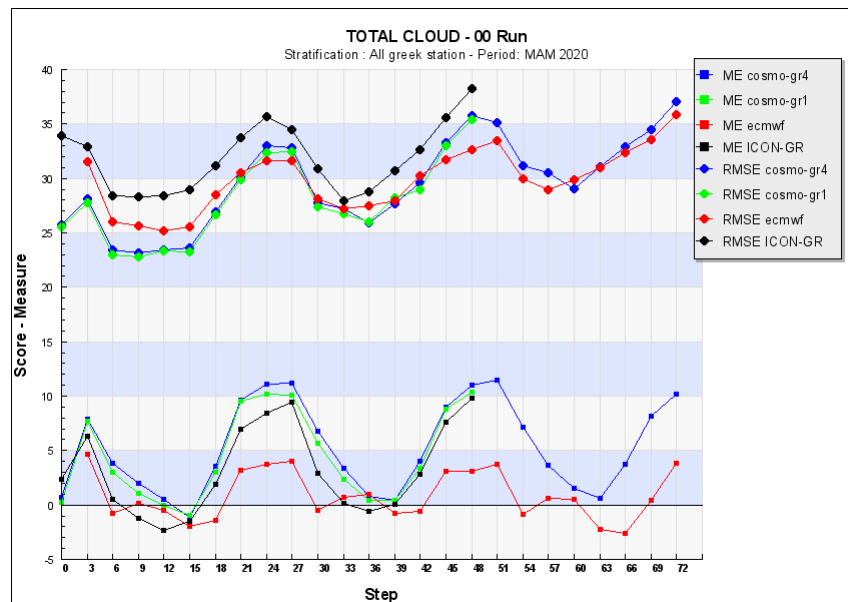


**WS 10m (>10kt) :** ICON results better than all other models with only slight underestimation at noon

**ICON-GR**  
**IFS-ECMWF**  
**COSMO4**  
**COSMO1**



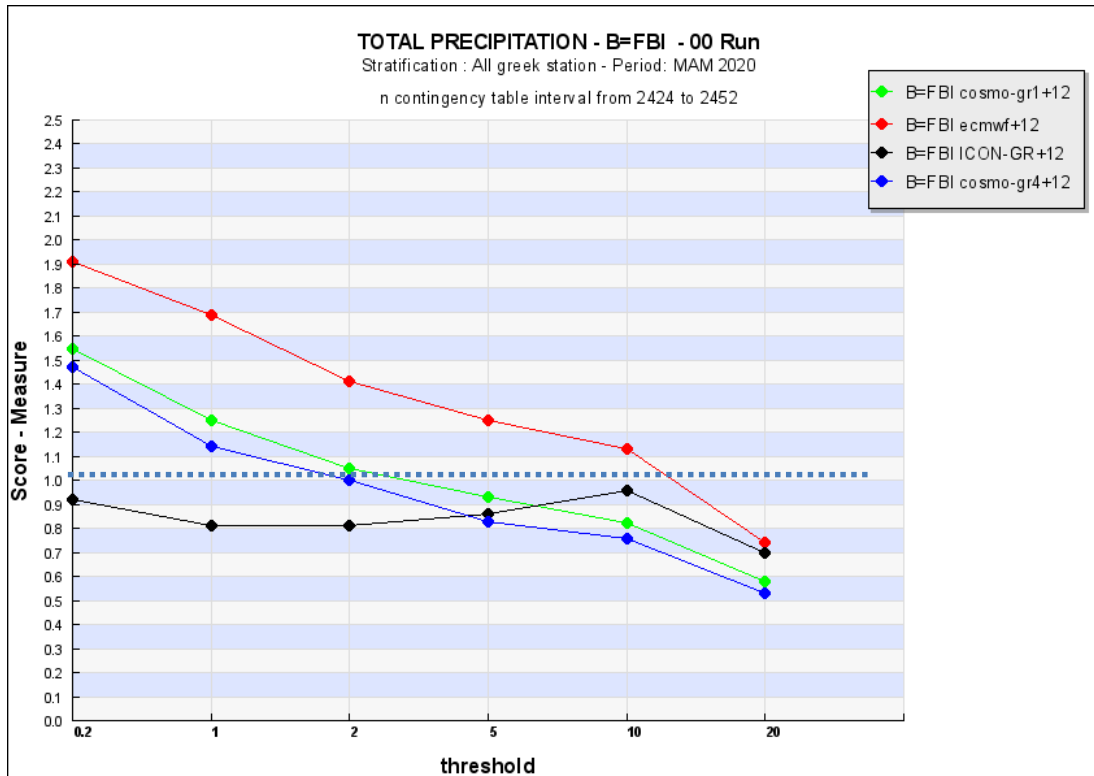
**MSLP:** ICON Bias Cycle more consistent with IFS-ECMWF. Slight overestimation noon. ICON RMSE lower than COSMO models



**TCC:** ICON bias similar diurnal cycle with COSMO, with night time overestimation. RMSE slightly higher than COSMO models

**ICON-GR**  
**IFS-ECMWF**  
**COSMO4**  
**COSMO1**

## 12h Precipitation (step 12)



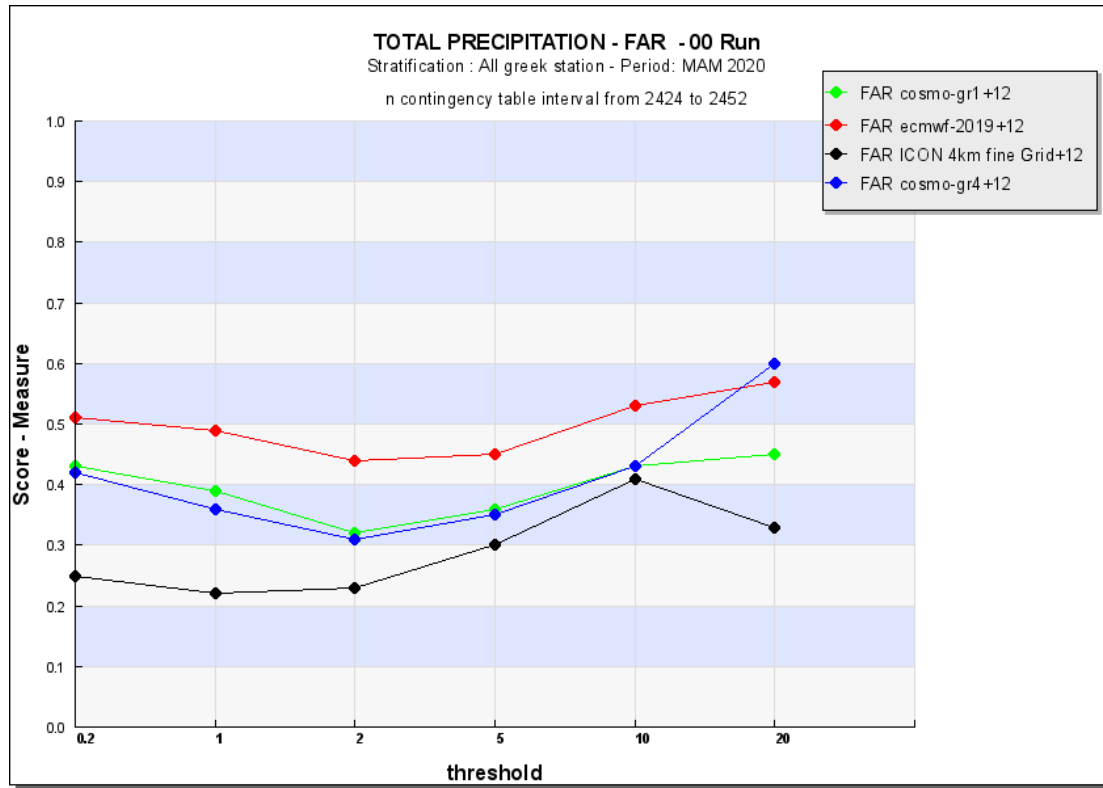
Thresholds 0.2 to 20mm

ICON-GR  
IFS-ECMWF  
COSMO4  
COSMO1

### Frequency Bias (FBI)

ICON-GR **FBI** satisfactory (slightly less than 1-  
number of events slightly underestimated)  
Less variability with thresholds

## 12h Precipitation (Step 12)

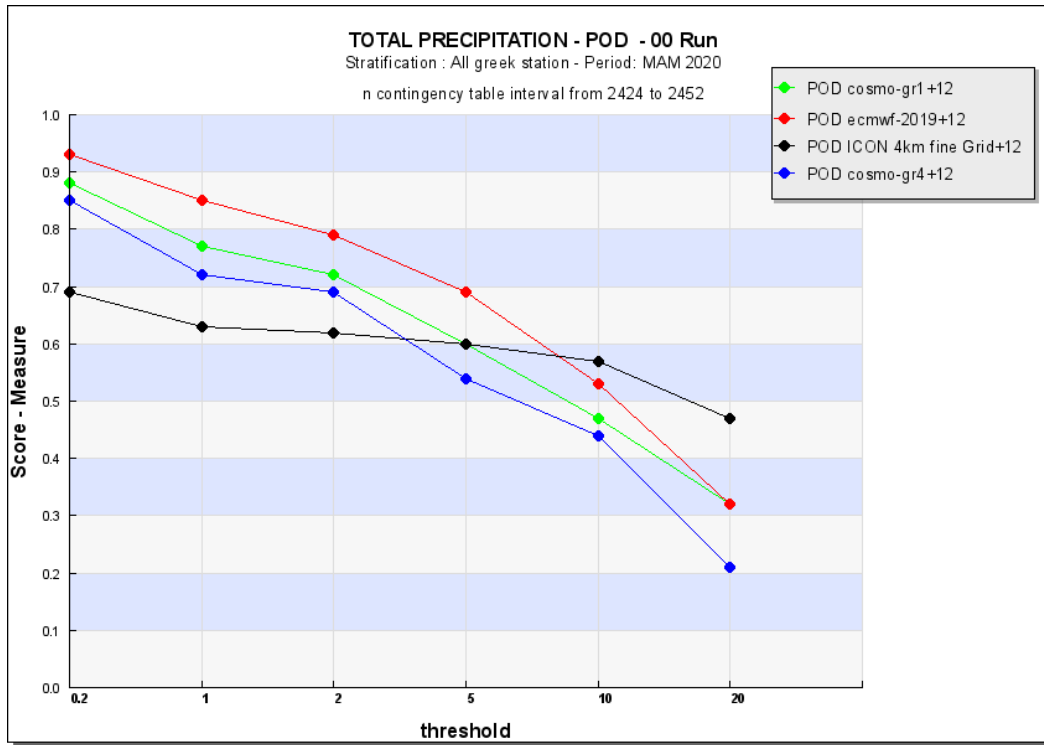


Thresholds 0.2 to 20mm

**False Alarm Rate (FAR):** ICON-GR  
FAR lower than other models->  
Less false alarms-slightly increases  
with threshold

**ICON-GR**  
**IFS-ECMWF**  
**COSMO4**  
**COSMO1**

## 12h Precipitation (Step 12)

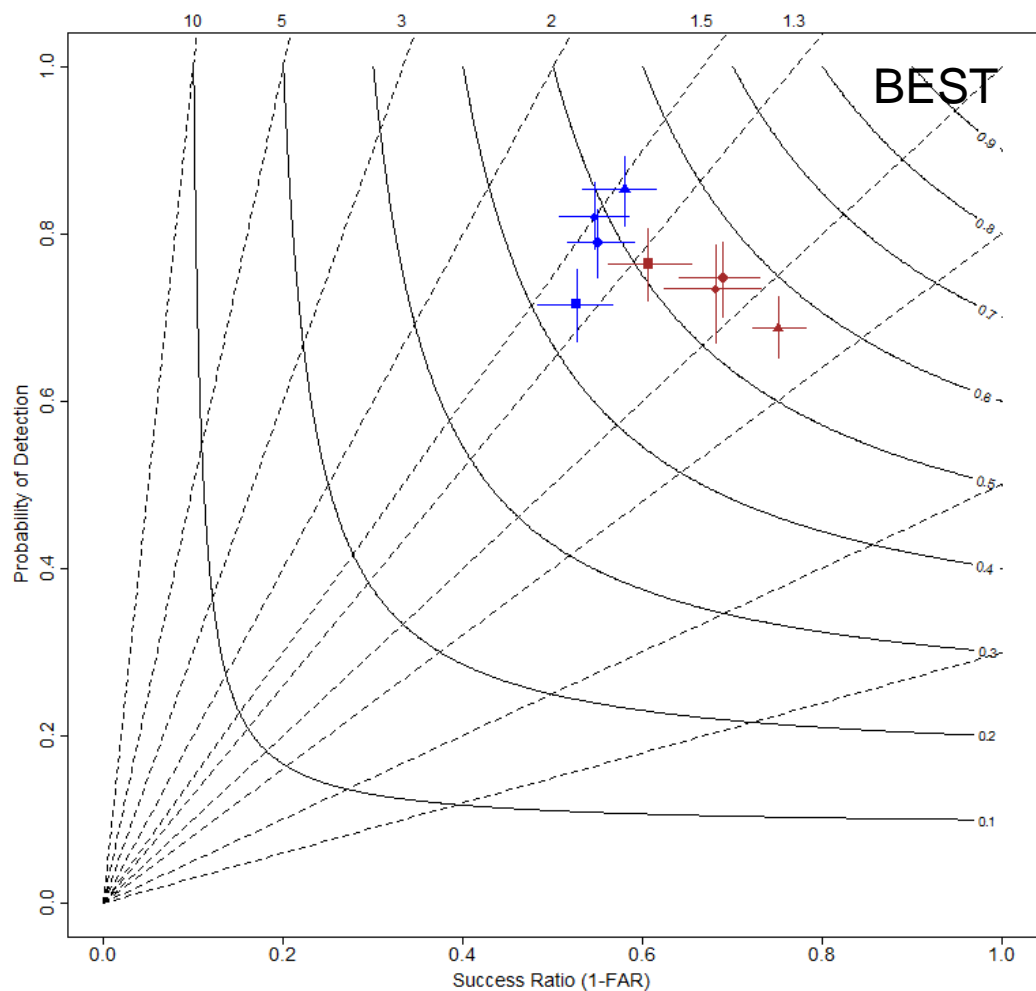


Thresholds 0.2 to 20mm

**ICON-GR**  
**IFS-ECMWF**  
**COSMO4**  
**COSMO1**

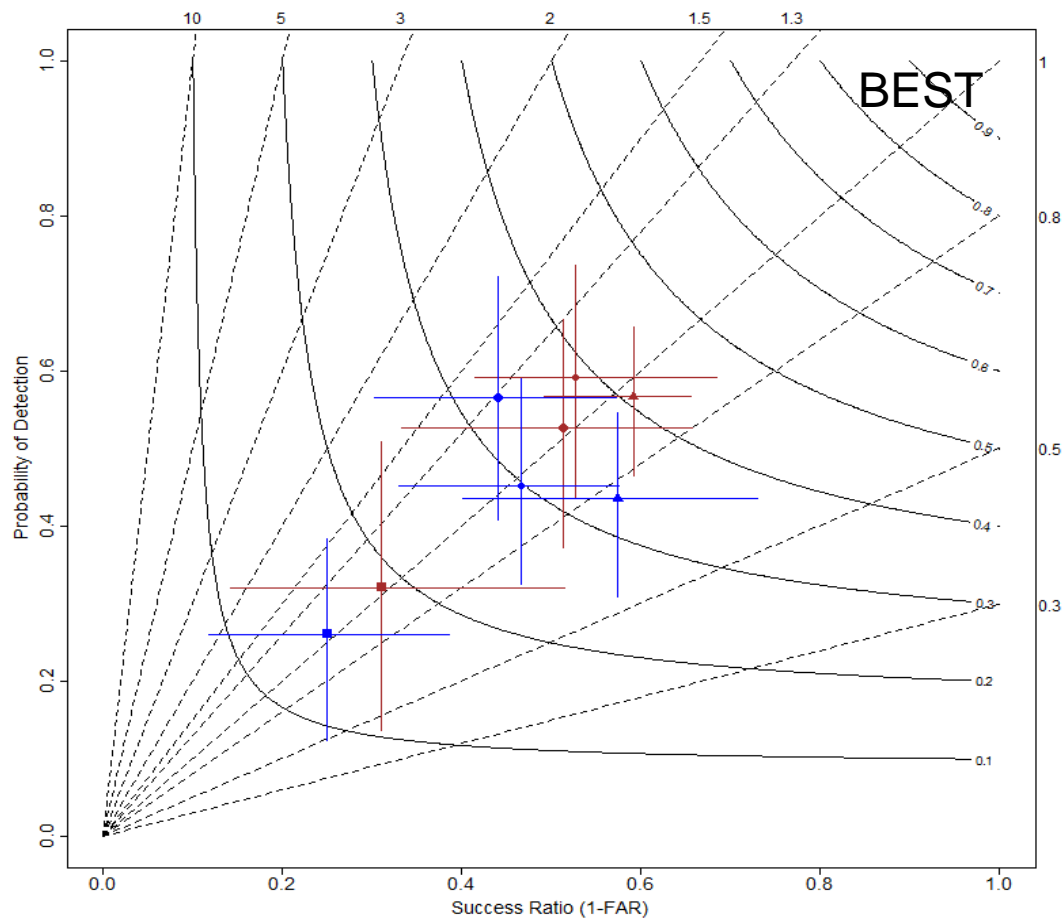
**Probability of Detection (POD)**  
ICON-GR worse than COSMO for  
low thresholds- better for higher

## Performance Diagram 0.2mm MAM 2020 (12h)



Forecast quality worsens for COSMO4 with forecast time,  
relatively constant for ICON-GR (1-FAR decreases- more false  
alarms with forecast time)



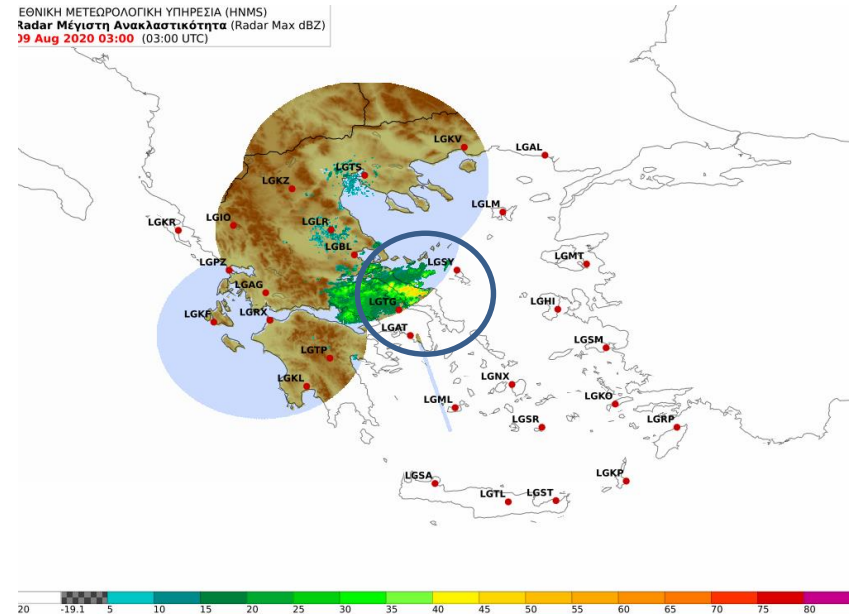
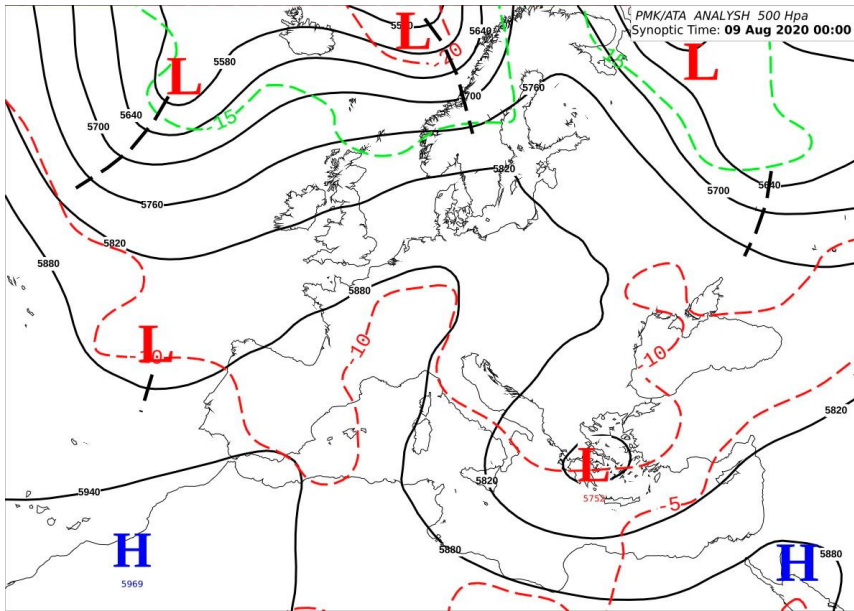


## Performance Diagram 10mm MAM 2020 (12h)

### FORECAST DAY 1

- ▲ ICON-GR + 12
- ICON-GR + 24
- ◆ ICON-GR + 36
- ICON-GR + 48
- ▲ COSMO-4 + 12
- COSMO-4 + 24
- ◆ COSMO-4 + 36
- COSMO-4 + 48

For higher thresholds, ICON-GR performs better then COSMO-4



An example  
of high  
values of  
Precipitation

**8-9 August 2020**

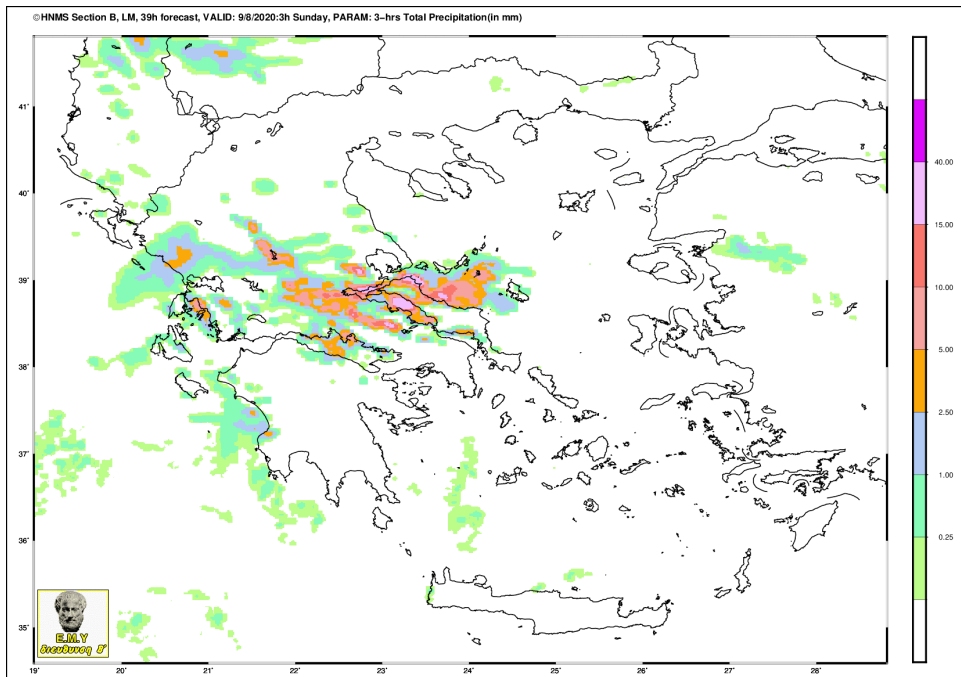


**Trough and  
cold air after  
warm days  
Flooding over  
Evia island**

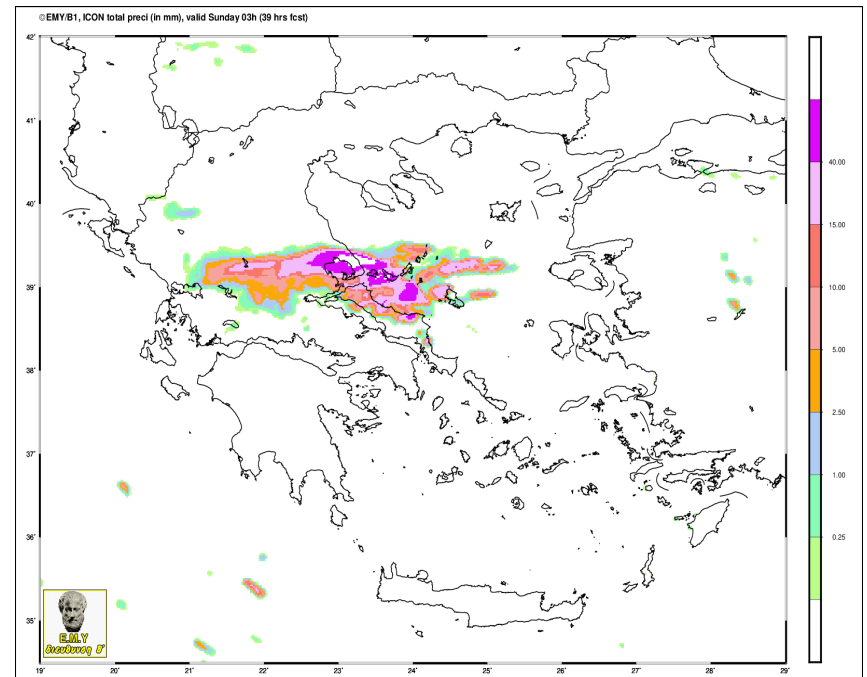
9/8/2020 0300 UTC **39** hours of simulation

3h precipitation: ICON shows more precipitation than COSMO4

## COSMO4



## ICON-GR



9/8/2020 0300 UTC **27** hours of simulation

3h precipitation >100mm ICON forecast better over Evia island

## COSMO4

## ICON-GR

