



# Priority Task Terra Nova Status

# PT Terra Nova

## Objectives

- Describe current status
- Discuss open issues
- Coordinate with RHM colleagues
- Present preliminary results for MED domain



# PT Terra Nova

## Current Status

- extension approved until end Feb. 2019
- simulations of base version (5.00, 5.03) are complete
- Comparison of base version to CLM<sup>2</sup> – complete (Verena)
- 5.05 version running for MED domain  
**but not for central EU** (compatibility to IFS)
- 5.05 version for NW EU (RHM) – is it ready?



# PT Terra Nova

## Simulations setup

- According to DWD experiments
  - v5.05 old configuration (loldtur = TRUE)
  - v5.05 recommended configuration
  - v5.05 with full (extended) features
- For 7 km resolution – possibly more options (BUs, Time)
- RHM – how many v5.05 configurations can be run?



# PT Terra Nova

## Verification

- IMS system running
  - 36 ground stations (preliminary results)
  - 8 upper-air stations
- MCH “movero” – not setup yet for PT (Credit Pirmin Kaufman)
- RHM –VERSUS – status?



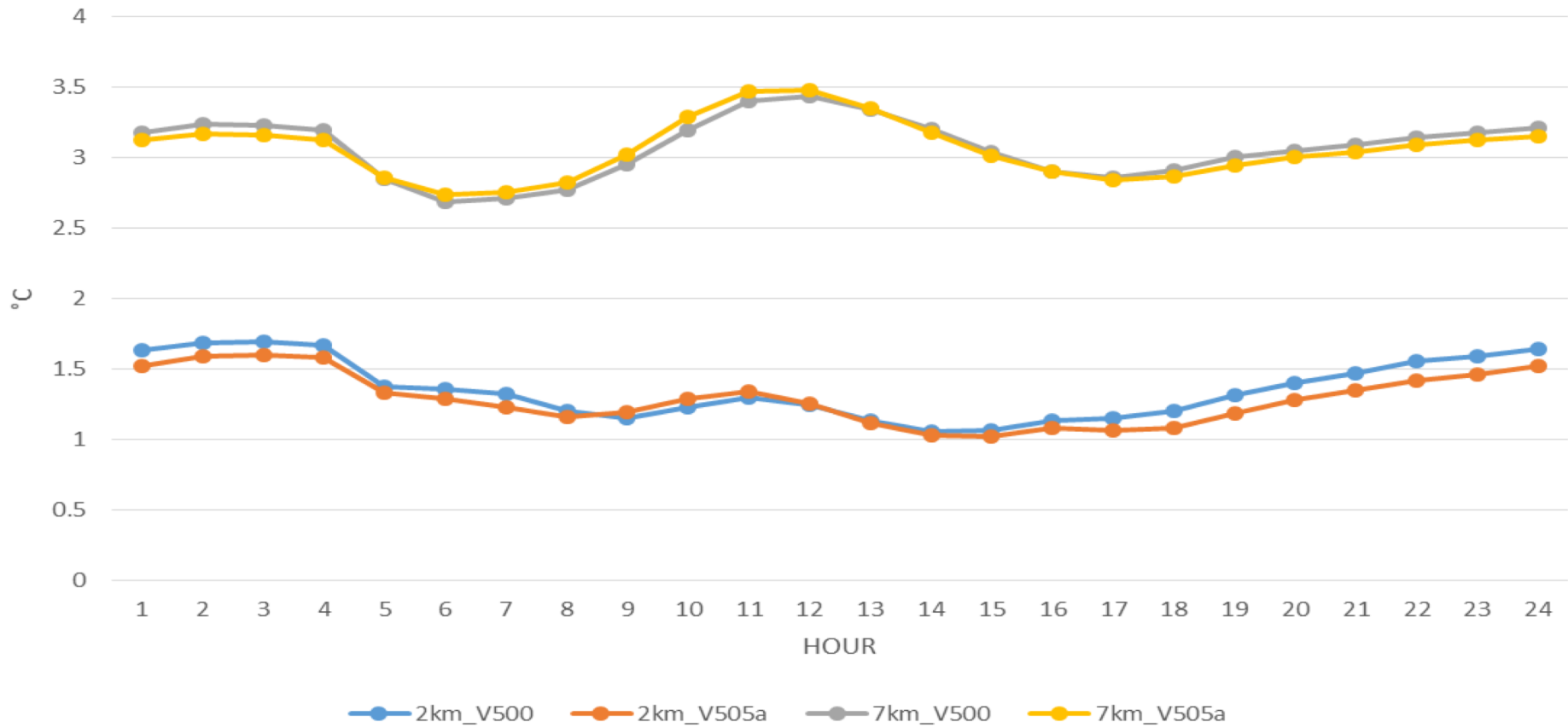
# PT Terra Nova

## Open issues

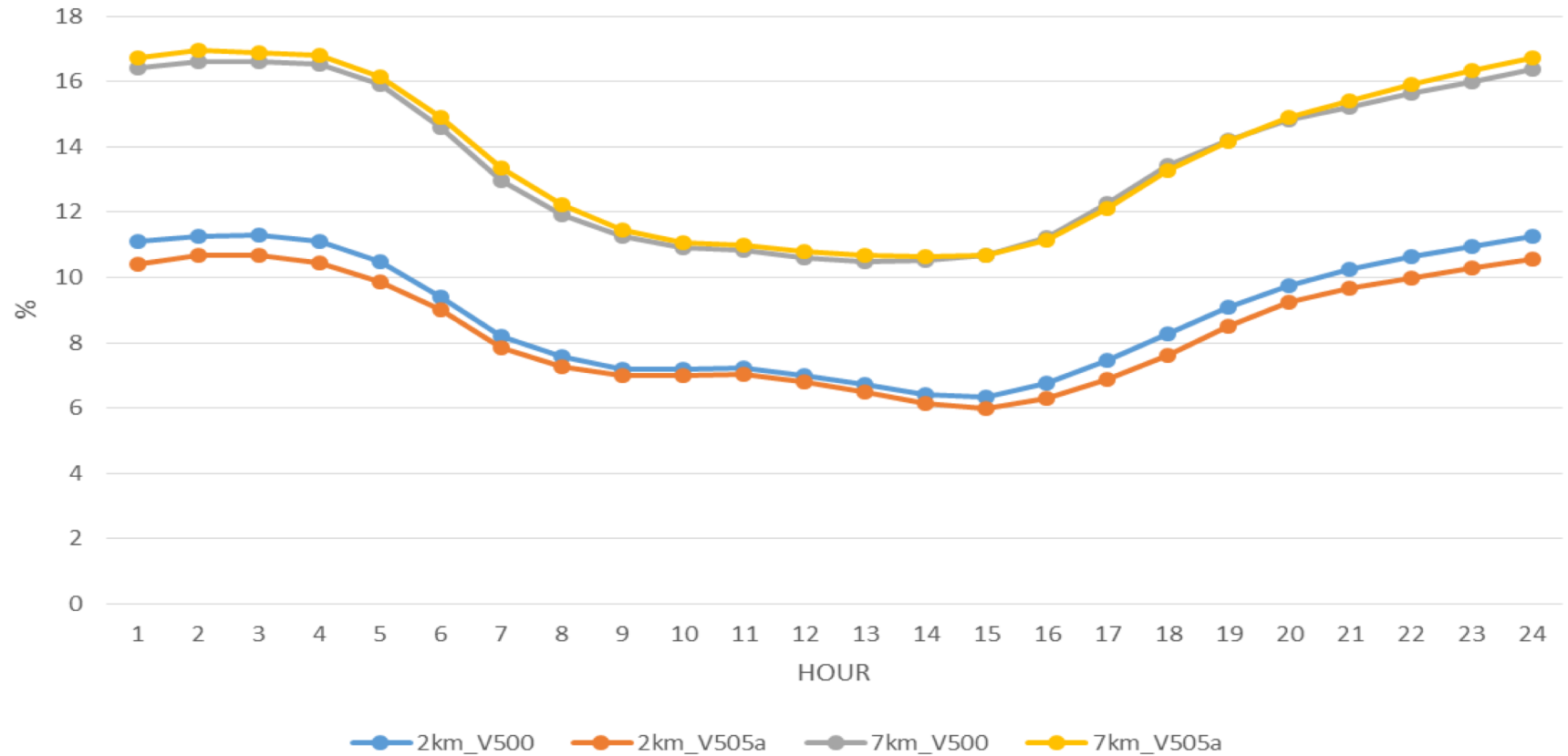
- **Running v5.05 for central EU (Uli S., Andre W.)**
  - soil from ICON (*compatibility to CLM verif*)
  - patch for IFS (*atm. not represented correctly*)
  - another solution – requires exploration
- **North Western EU (RHM)**
  - v5.05 operative
  - no. of configurations
  - VERSUS



T2M - Hourly MAE- 5.0 Vs 5.05  
36 stations, Israel, MAMJJA

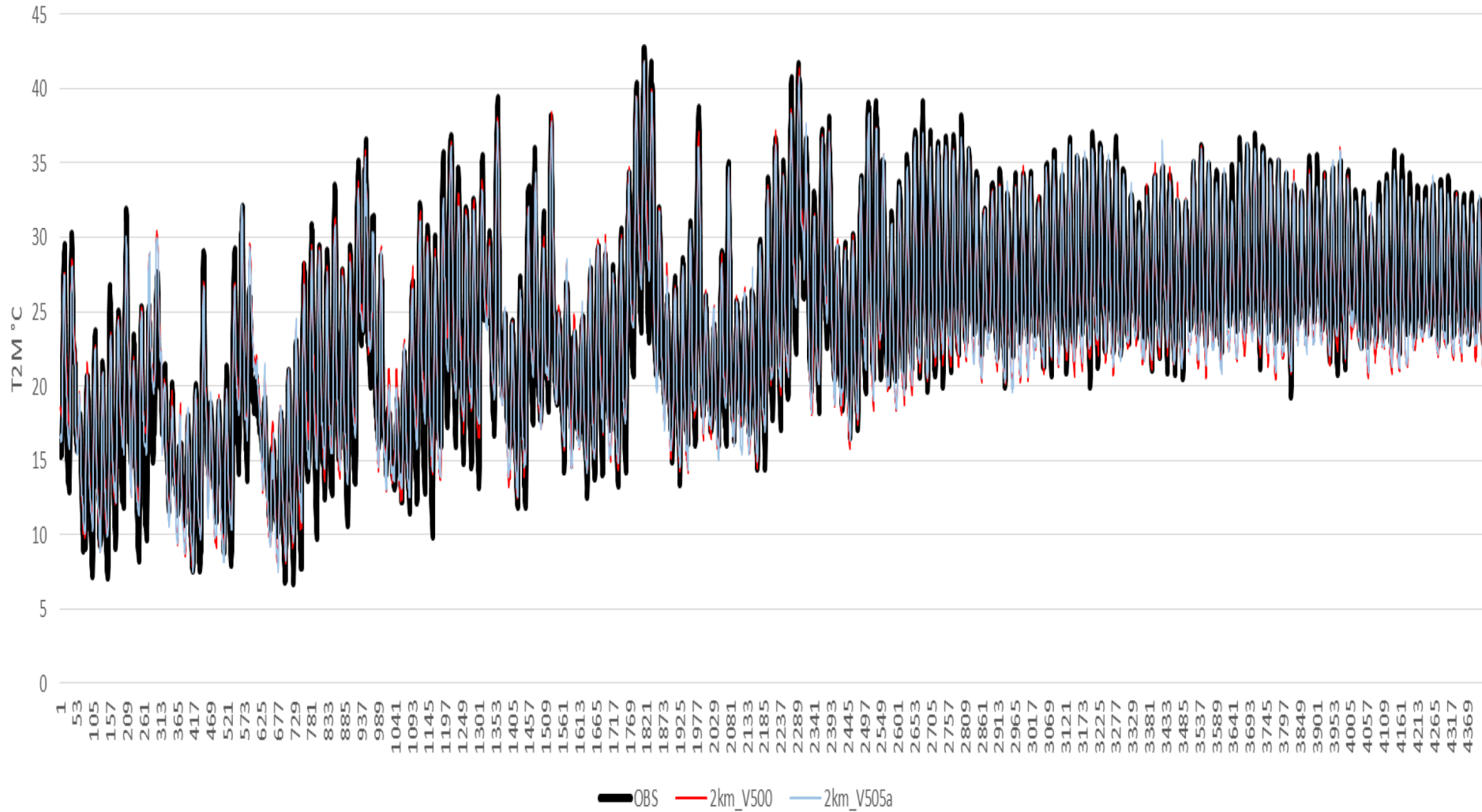


RH2M - Hourly MAE- 5.0 Vs 5.05  
36 stations, Israel, MAMJJA

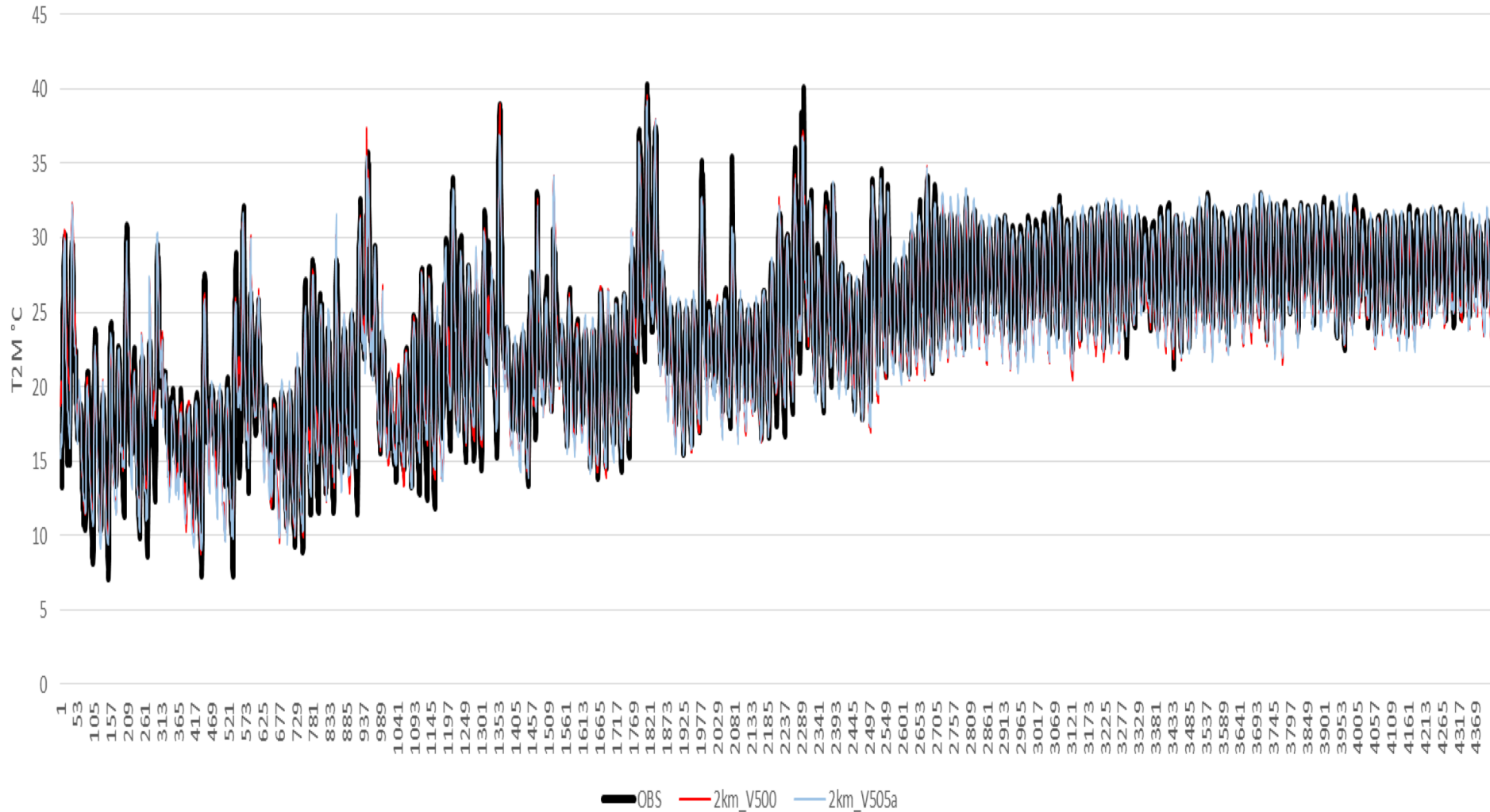




Beer Sheva MAMJJA T2M  
2km 5.0 Vs 5.05a



### Bet Dagan MAMJJA T2M 2km 5.0 Vs 5.05a





THANK YOU