

From the COSMO Steering Committee (STC)

D. Majewski, DWD

38th COSMO Steering Committee meeting

Monday 5th of September 2016, 9:00 – 17:45

Tuesday 6th of September 2016, 14:00 – 18:15

*D. Majewski (Germany), P. Steiner (Switzerland),
L. Torrisi (Italy), P. Skrimizeas (Greece), A. Wyszogrodzki
(Poland), G. Stancalie (Romania), D. Kiktev (Russia),
M. Ziemianski (SPM), Y. Levi (Israel, applicant member)*



Israel Meteorological Service (IMS)

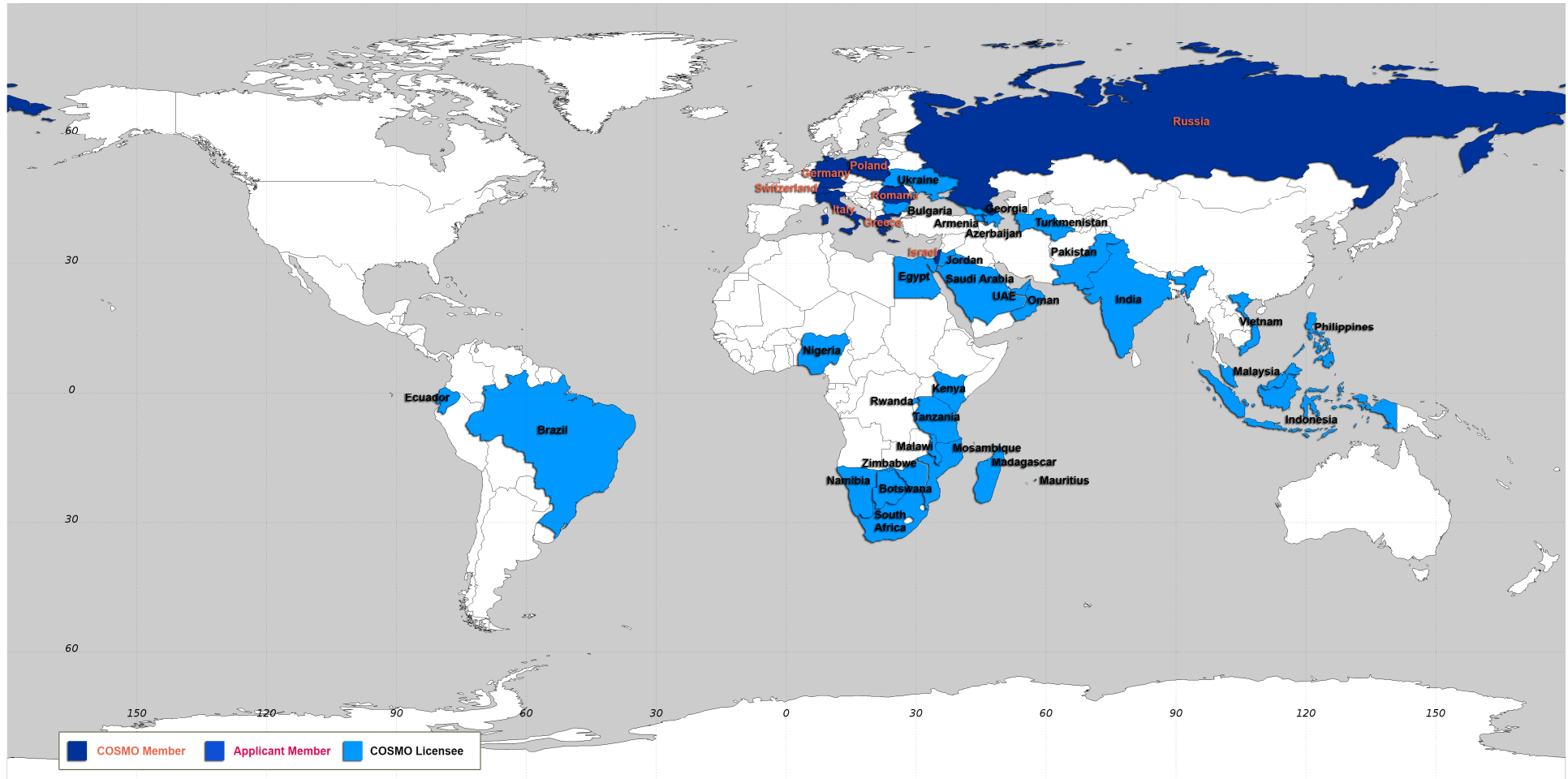
as 8th COSMO Member

History of IMS application to join COSMO

- **Jan. 2012: IMS shows interest to join COSMO**
- **Aug. 2012: IMS formally applies to join COSMO**
- **Dec. 2013: IMS sends Annex I (of new COSMO agreement) with evaluation criteria (IMS scored 70 points; at least 55 are required for an application)**
- **Dec. 2013: P. Steiner informs all STC members about IMS application and asks for their opinion**
- **June 2014: New COSMO agreement signed**
- **1 September 2014: IMS becomes applicant member**

Next steps of IMS application to join COSMO

- **Sep. 2016: Michal Ziemianski reports about IMS contribution to COSMO during application period (STC meeting in Offenbach).**
- **STC decides that the COSMO directors will be asked to add IMS as 8th COSMO Member.**
- **IMS has to sign Annex K of the COSMO Agreement (eight copies); These eight copies will be sent to all COSMO directors for approval (signature).**



New Chair of the COSMO STC

Procedure according to Annex B of COSMO Agreement

The STC is responsible for:

- electing the **Chair of the Steering Committee** to be selected among the members of the Committee on a rotation basis among the Partners for a period of **2 (two) years**. In specific situations the STC can decide a reelection for a period of 1 (one) year, with a maximum of two reelections possible.
- The new **Chair of STC: Andrzej Wyszogrodzki (Poland)** starting January 2017.

New Scientific Project Manager (SPM)

Procedure according to Annex B of COSMO Agreement

Appointment of the SPM

- The **SPM** is appointed by the COSMO Steering Committee for a duration of four years. In specific situations the STC can decide a reelection for a period of 1 (one) year, with a maximum of two reelections possible.
- The new **SPM: Dmitrii Mironov (Germany)** starting January 2017.

COSMO License Income and Activity Proposals

- Botswana
- Brazil-INMET
- Brazil-DHN
- Namibia
- Oman
- Saudi Arabia
- United Arab Emirates

Total license fee income in 2016: 140.000 € (NOW NO taxes have to be paid by DWD!)

But most of the expenses will be taxed; thus on average we pay about 15% taxes on the accepted Activity Proposals.

Therefore for 2016 we can spend for Activity Proposals: 119.000 €!

Main expenditure (see the Excel sheet distributed!)

Maintenance of GPU capable code:	36.740 € (covered by DWD budget!)
COSMO CLM/ART Training February:	10.196 €
COSMO User Seminar March Icebreaker:	1.456 €
Trips to COSMO User Seminar March:	9.900 € (~ 20 trips)
Other trips of COSMO scientists:	19.750 € (~ 25 trips)
ESSL Testbed (split between 2016 and 2017):	10.000 €
COSMO User Support (by NMA):	8.000 €
Invitation V. Larson (Uni. Wisconsin):	4.122 €
Invitation T. Necker (Uni. Muenchen):	15.000 €
COSMO Web-Server (at HNMS):	2.400 €

Accepted until August 2016: 80.824 €

Thus we are now well within the budget (119.000 €)!

- **Activity Proposals for trips between COSMO members to cooperate on joint research activities are most welcome!**
- **But we also support the participation at important international conferences!**
- **Mr. Daniel Egerer is now processing the Activity Proposals, please make his life easy!!**
- **No refunding possible between November and February due to budget regulations!**



STC reviewed the current status of WGs, PPs and PTs

(The colour coding (**green**, **yellow** and **red**)
helps us to go through the reports!)

WG	Name	Coordinator
<u>WG1</u>	Data assimilation	<u>Christoph Schraff</u>
<u>WG2</u>	Numerical aspects	<u>Michael Baldauf</u>
<u>WG3a</u>	Physical aspects, Upper Air	<u>Matthias Raschendorfer</u>
<u>WG3b</u>	Physical aspects, Soil and Surface	<u>Jean-Marie Bettems</u>
<u>WG4</u>	Interpretation and Applications	<u>Pierre Eckert</u>
<u>WG5</u>	Verification and case studies	<u>Flora Gofa</u>
<u>WG6</u>	Reference Version and Implementation	<u>Massimo Milelli</u>
<u>WG7</u>	Predictability and Ensemble Methods	<u>Chiara Marsigli</u>

Thanks to the WG-Leaders and the scientists involved for all the work, ideas, dedication!

CALMO

Calibration of COSMO Model

Project leader: A. Voudouri (HNMS)

Start: 1.01.2013, end (planned) 31.12.2016

CDIC

Comparison of the dynamical cores of ICON and COSMO

Project leader: Michael Baldauf (DWD)

Start: 1.09.2015, end (planned) 31.08.2017

CELO

COSMO-EULAG operationalization

Project leader: Bogdan Rosa (IMGW-PIB)

Start: 1.09.2012, end (planned) 31.03.2018

INSPECT

**Intercomparison of Spatial Verification Methods for
COSMO Terrain**

**Project leader: Anastasia Bundel (RHM) and Flora Gofa
(HNMS)**

Start: 1.04.2015, end (planned) 31.08.2017

KENDA-O

Km-scale ENsemble-based Data Assimilation for high-resolution Observations

Project leader: Christoph Schraff (DWD)

Start: 1.09.2015, end (planned) 31.08.2020

POMPA

Performance On Massively Parallel Architectures

Project leader: Xavier Lapillonne (MeteoSwiss, Oliver Fuhrer before 2015)

Start: 1.09.2010, end (planned) 31.12.2016

SPRED

Studying Perturbations for the Representation of modeling uncertainties in Ensemble Development

Project leader: Chiara Marsigli (Arpae-SIMC)

Start: 1.09.2015, end (planned) 31.08.2017

T²(RC)²

Testing and Tuning of Revised Cloud Radiation Coupling

Project leader: Harel Muskatel (IMS)

Start: 1.09.2015, end (planned) 31.08.2017

WG6-SPRT

Working Group6's support activities

Project leader: Massimo Milelli (ARPA Piemonte)

Continuous/permanent activity

VERSUS 2

VERification System Unified Survey 2

Project leader: Roberto Bove

Start: 1.09.2008, end (planned) 31.03.2016

STC accepted the updated / potential new PP / PT

CDIC, CALMO, INSPECT, POMPA, KENDA-O

CONSAT4, EDP2, TERRA NOVA

More ideas for new PP and PT needed 

COSMO Strategy Review (SMC Meeting!)

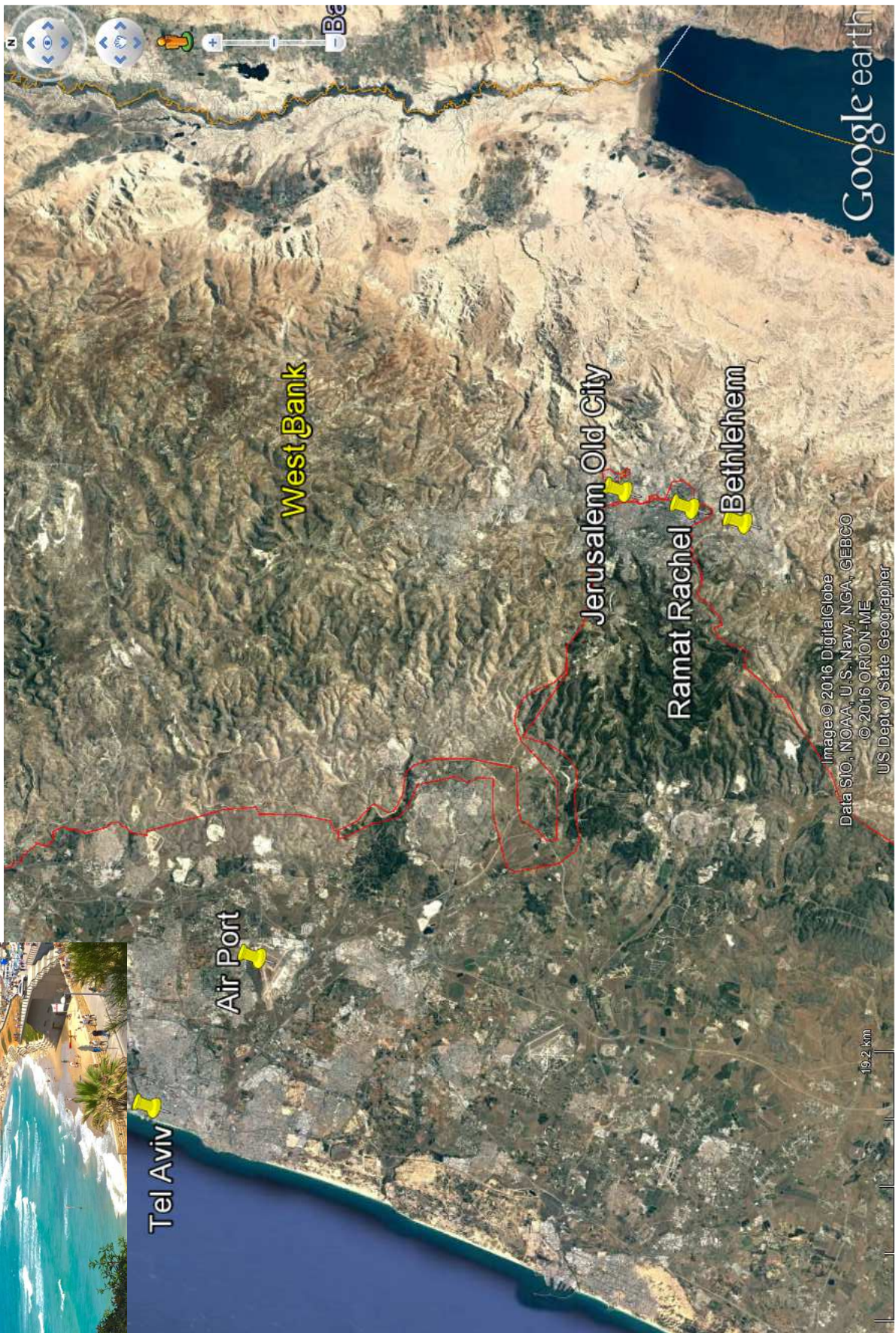
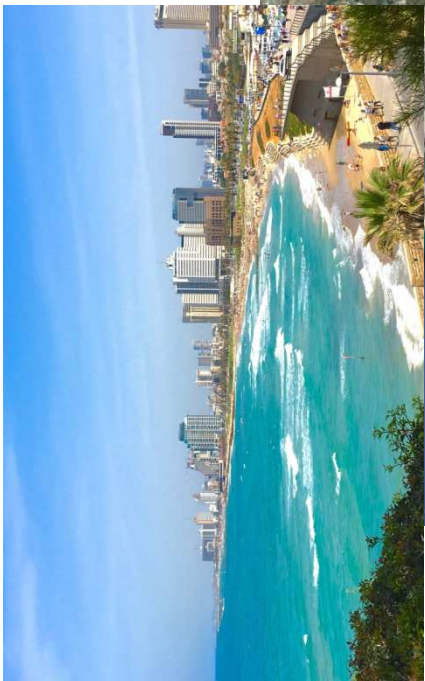
**COSMO is in very good shape to
tackle the future challenges!**

Next COSMO GM

The 19th COSMO GM

11-15/9/2017 Jerusalem





Ramat Rachel Hotel



View to Bethlehem



Excursion to the old city



Church of the Resurrection

Where Jesus was crucified and Jesus's empty tomb (buried and resurrected)



Western Wall



Thanks for coming to Offenbach!
Have a safe trip back home!