

## **PRIORITY PROJECT SPRED**

Studying Perturbations for the Representation of  
modelling uncertainties in Ensemble Development

Chiara Marsigli

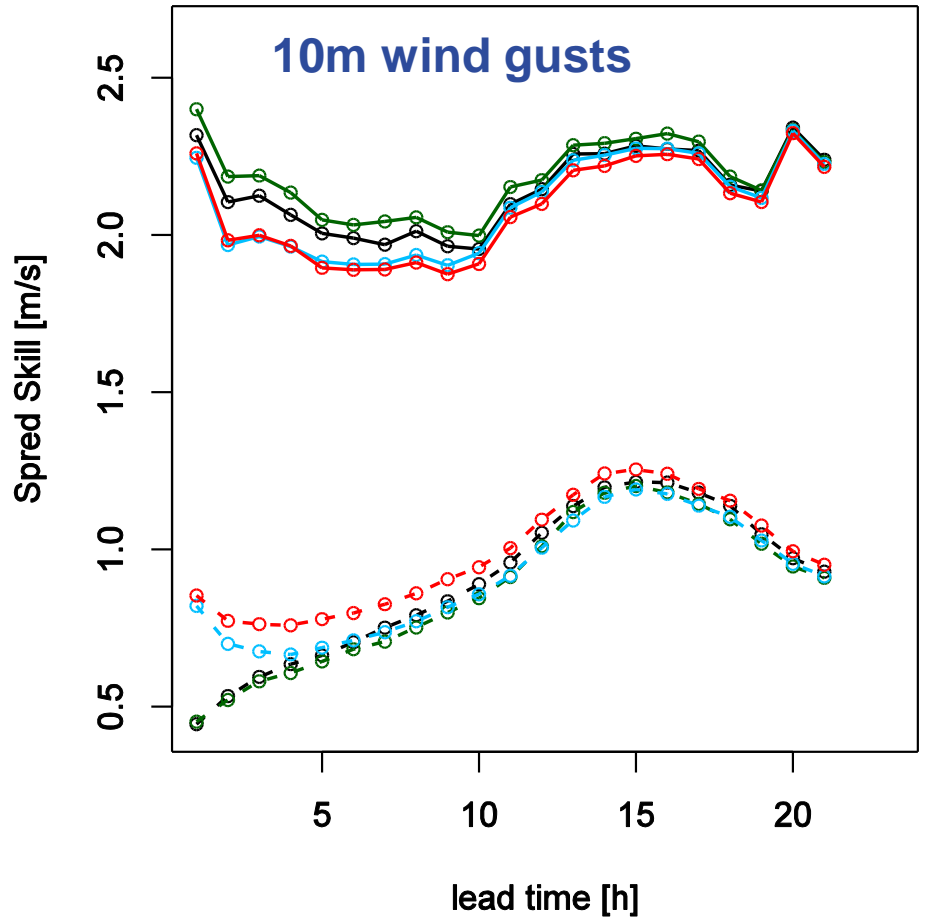
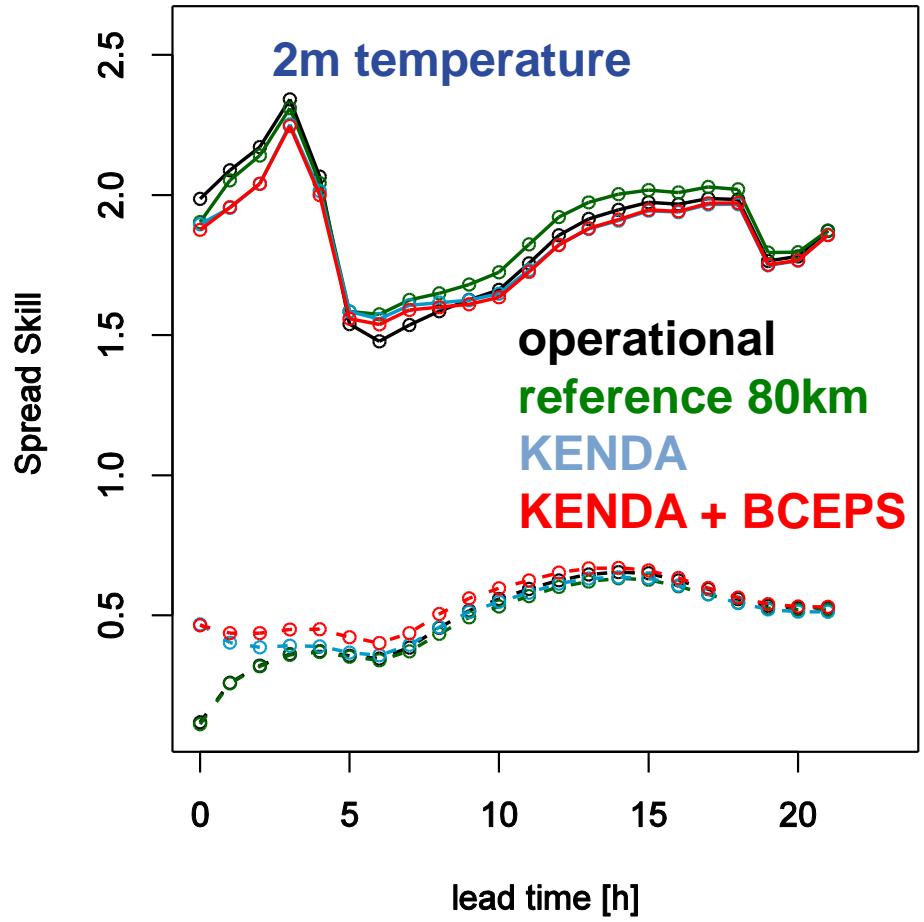
**ARPA Emilia-Romagna – SIMC, Bologna, Italy**

# Outline

- Motivation
- Tasks
- Participants

# COSMO-DE-EPS

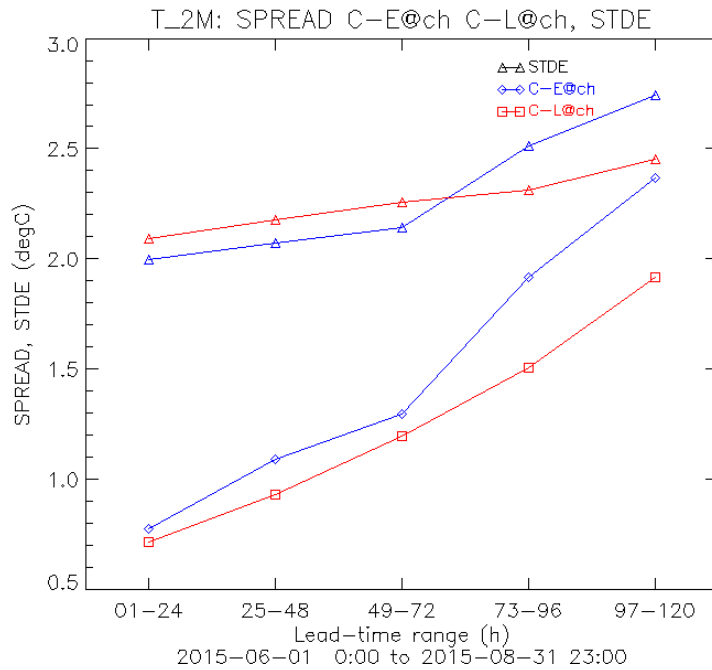
*EWeLiNE*   
Richard Keane



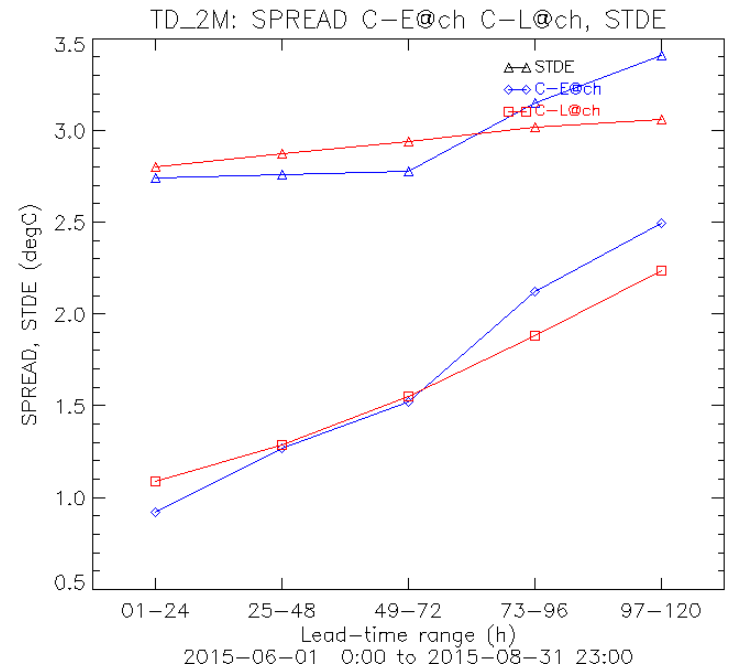


# COSMO-E

## T2m, Alps



## TD2m, Alps



COSMO-E  
COSMO-LEPS

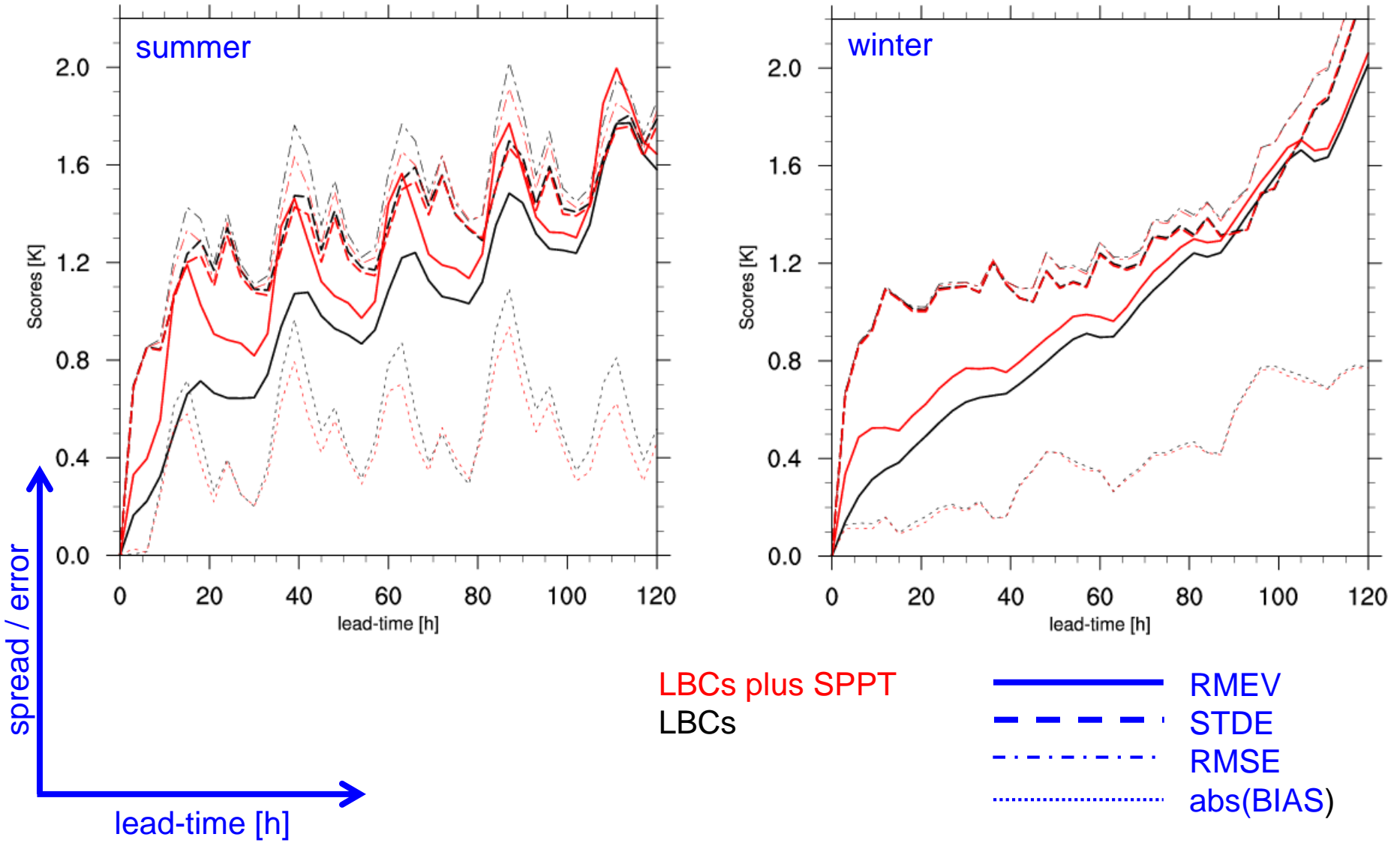


# spread / error: temperature

k=60 / ~10 m

T 20120726-20120825-2days al k-level 59

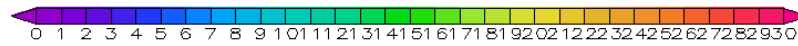
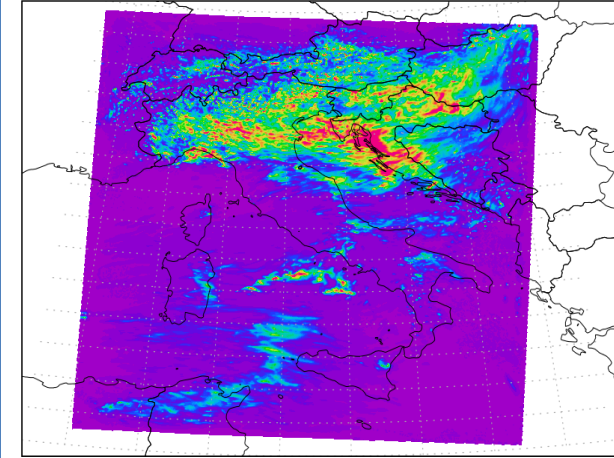
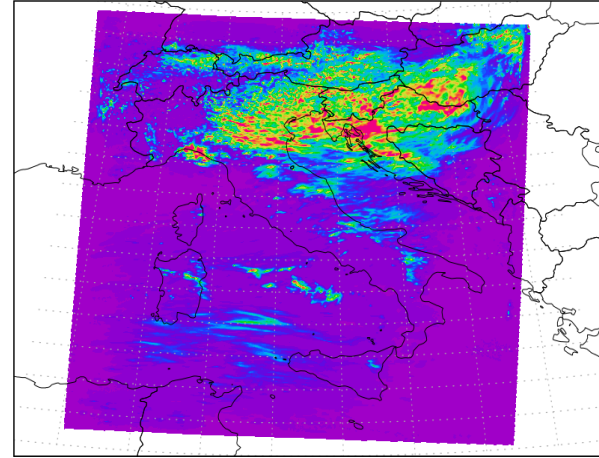
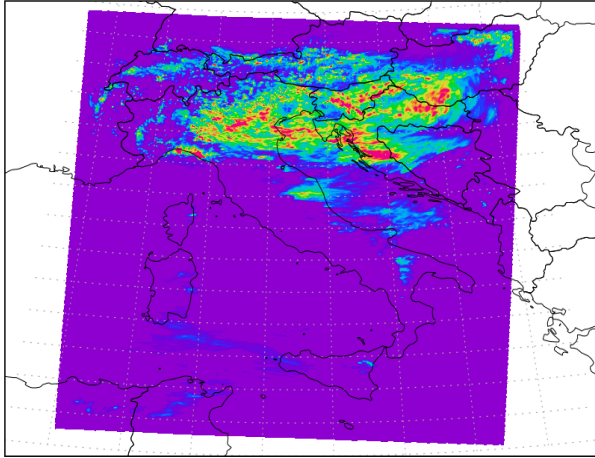
T 20121203-20121231-2days al k-level 59



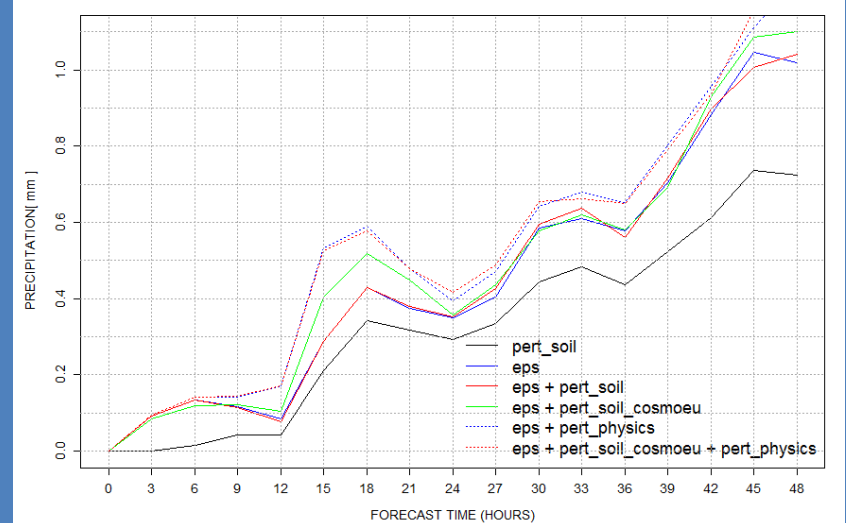
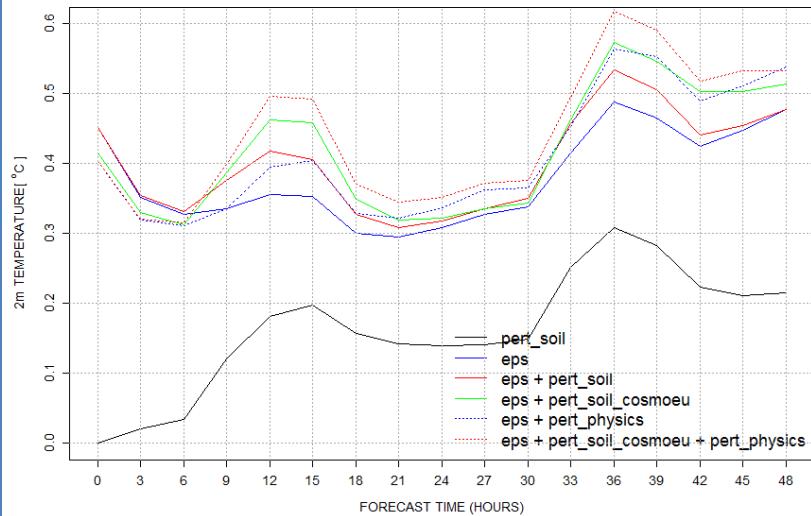
Tot Prec std [mm] 11SEP2014 00UTC

Tot Prec std [mm] 11SEP2014 00UTC

Tot Prec std [mm] 11SEP2014 00UTC



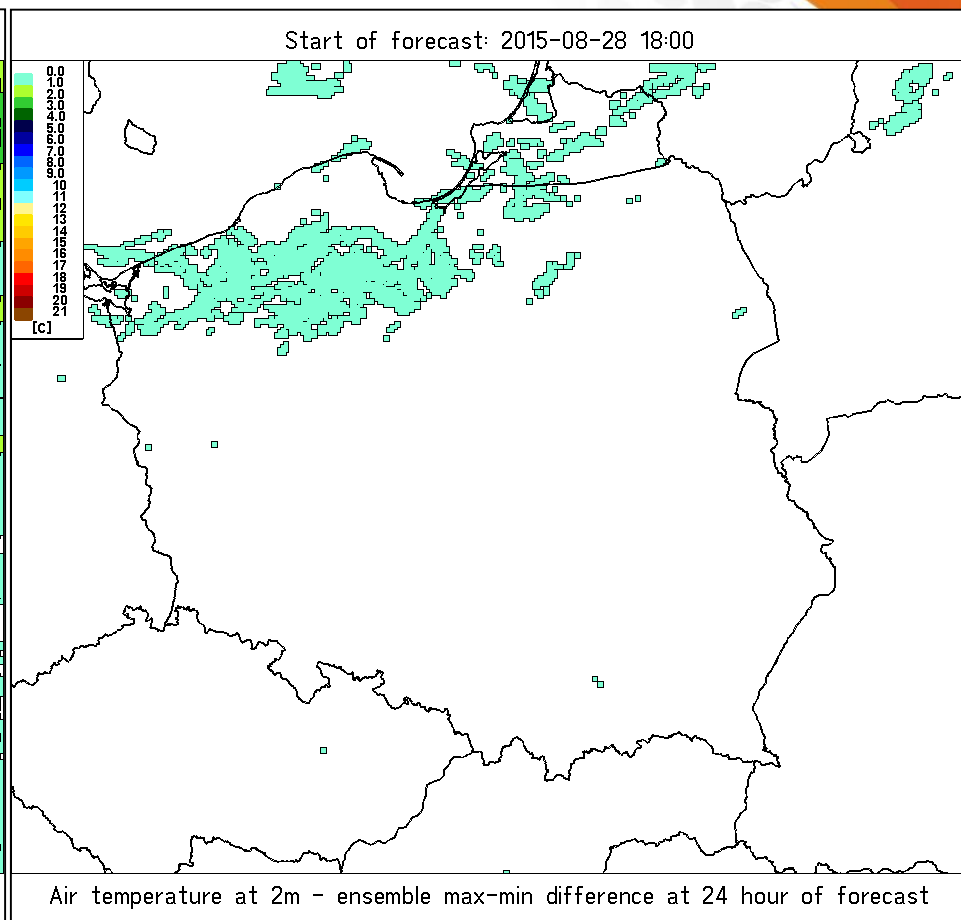
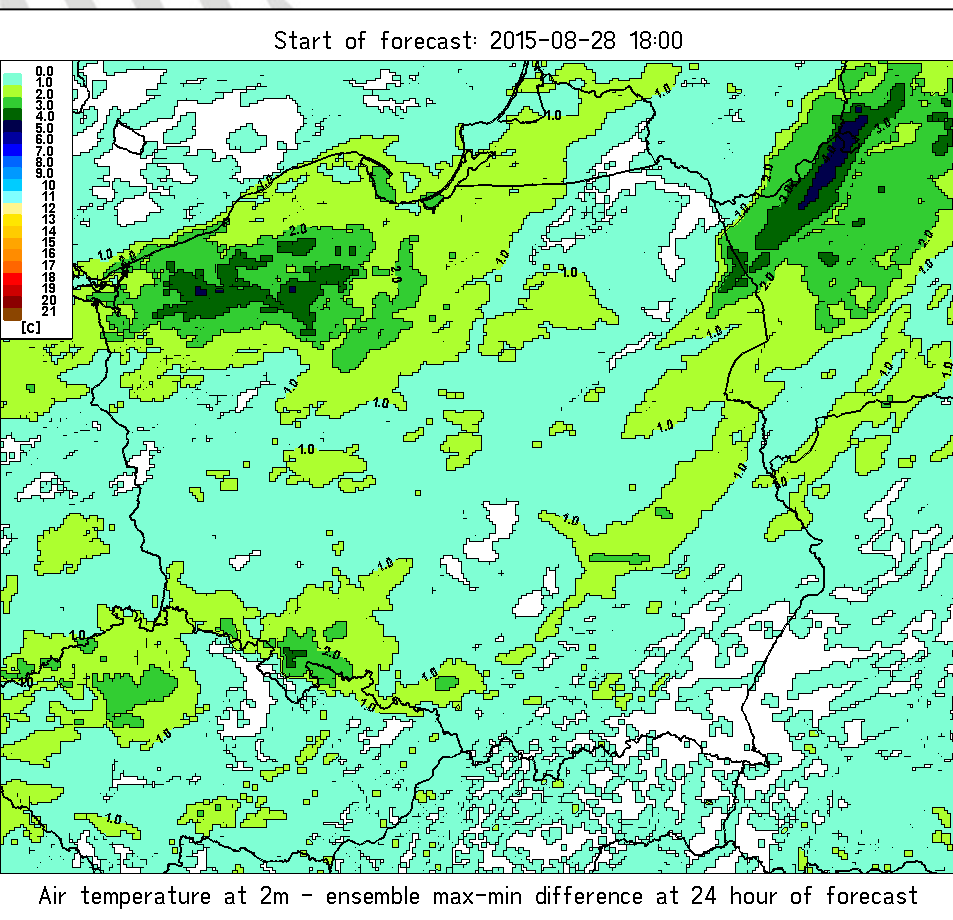
case study: 10/09/2014





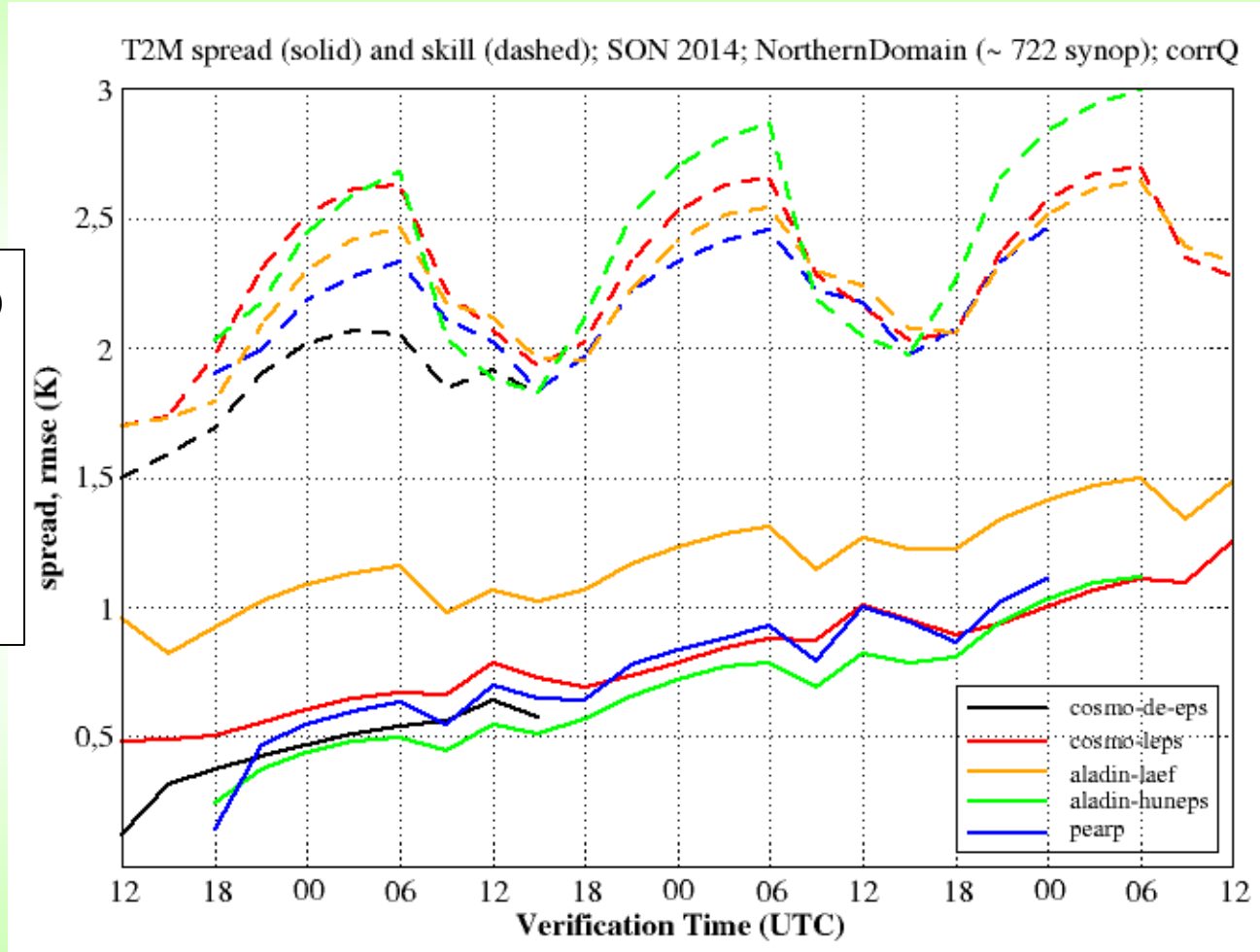
# Polish ensemble (TLE-MVE)

T2M – Time-Lagged (left) vs. one deterministic (right) set of BICs:



# TIGGE-LAM

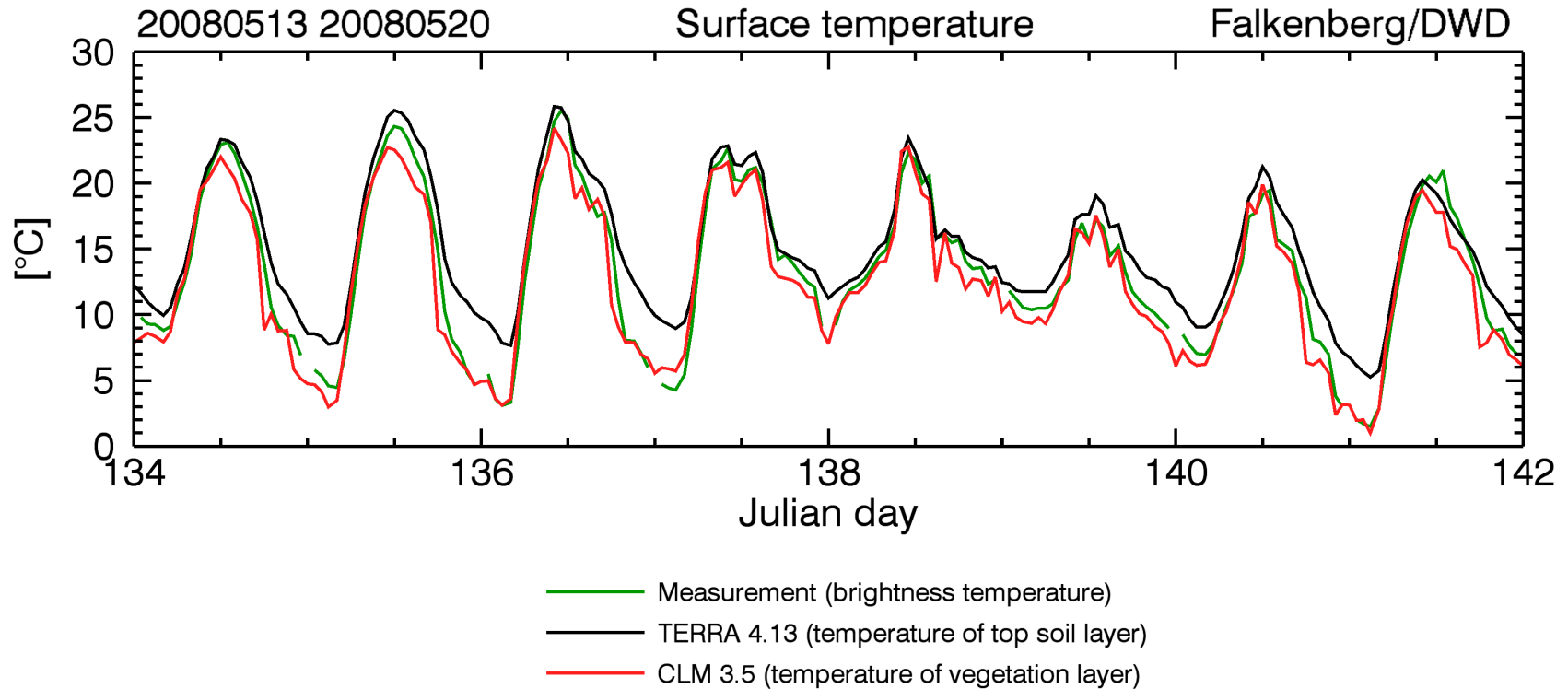
- COSMO-DE-EPS (20 m, 2.8 km)**
- COSMO-LEPS (16 m, 7 km)**
- ALADIN-LAEF (17 m, 15 km)**
- ALADIN-HUN (11 m, 11 km)**
- PEARP (35 m, 25km)**





# From WG3b talk by J. M. Bettems

## Vegetation shading (G. Vogel, JP. Schulz)



# Tasks

- **Task 1:** Study of the spread/skill relation in the ensembles (0.55 FTE)
- **Task 2:** Model perturbation (0.8 FTE)
- **Task 3:** Lower boundary perturbation (3 FTE)
- **Task 4:** Post-processing and interpretation (1.9 FTE)
- **Task 5:** Initial Conditions for the CP ensembles (1.03 FTE)
  
- 2 year project, 7.28 FTE

# Participants

- **ARPA Piemonte:** Nicola Loglisci (0.7 FTE)
- **ARPA SIMC:** Chiara Marsigli, Andrea Montani, Tommaso Diomede (1.1 FTE)
- **COMET:** Francesca Marcucci and possible fellowship (1.0 FTE)
- **DWD:** Christoph Gebhardt (0.1 FTE)
- **IMGW:** Andrzej Mazur, Grzegorz Duniec, Witold Interewicz (2.9 FTE)
- **MCH:** André Walser, Kristina Klasa, Master Thesis (1.1 FTE)
- **RHM:** Elena Astakhova, Dmitry Alferov (0.45 FTE)

Thank you for your attention