

WG5 - From Rome to Lugano: The steps we took

WG5

WG5

During the WG5/VERSUS meeting in April at Pratica di Mare, many things were discussed and decided for the months to follow. These were addressed in the detailed minutes that followed and gave direction to all of us on how to progress with steps both large and small.

<http://www.cosmo-model.org/content/tasks/workGroups/wg5/meetings.htm>

WG5

VERSUS

Which of the following correlates better with your status the last several months?

100% percentile

Median

Outlier



MY status,
this
summer!!

Smaller-bigger steps...

1. Reforming of the Work Group Task list according to our decisions. The reviewed list is on the web, please let me know if any information is outdated or if you are involved in some verification activity that is not listed

Annual tasks and FTEs assignments

Rows: 0 added; 1 removed | Cells: 6 changed; 1 open | last: closing SET EDIT

Name	Mainly relates to	Target version	Task subject	Responsible person	Task status	Stared	Expected delivery	Secondary association
all notes all status								
1 Verification of surface weather parameters <input type="button" value="≡"/>								
1.1	COSMO	N/A	Verification of COSMO models surface weather elements with SYNOP stations	ALL	evaluate	N/A	2012-08-31	N/A
notes status								
Verification of surface weather elements in various time steps at SYNOP stations. and higher are available, for Mlsp, T2m, Td2m, 10m-wind, cloud cover, precipitation (mandatory). Wind gust and radiation verification is ongoing. New techniques for proper wind direction discrepancies representation.								
1.2	COSMO	N/A	Conditional Verification (CV)	ALL	evaluate	N/A	2012-08-31	N/A
notes status								
Following the indications coming out from the joint WG5-WG3-WG4 workshop held in Langen in February 2011 and the document reporting a common set of Conditional Verification, this task has the aim to increase the production and the use of CV, together with the standard ones. CV will have to be carried out through VERSUS. Reviewed document of recommendations and priorities for preparation of plots and is available online. Mandatory CV verification of selected cases is included in Common Plots seasonal report.								
1.3	COSMO	N/A	Responsibility for Common Plots Reports	USAM: A. Celozzi, A. Raspanti	evaluate	N/A	2012-08-31	N/A
notes status								
Quarterly scores produced through VERSUS have to be sent to the responsible member that will prepare and give a presentation during the GM WG5 Parallel Sessions. A choice of more significant plots and a summary of highlights are included in seasonal reports and are available on COSMO web site.								
1.4	COSMO	N/A	Dissemination of Daily Grib Model Output Files	MCH: De Morsier	evaluate	N/A	2012-08-31	N/A
notes status								
Exchange of Grib files to produce COSMO models maps at the COSMO WEB site. GRIB files of the 24h precipitation sums from +6h to +30h and the surface pressure (pmsl) at +24h of the operational 00 UTC forecasts from COSMO-EU (DWD), COSMO-7 (MeteoSwiss), COSMO-ME (USAM), COSMO-I7 (ARPA-EMR), COSMO-PL (IMGW), COSMOGR (HNMS) and COSMO_RO (NMA) are sent daily to the COSMO web site for verification and comparison purposes. RHM is currently not participating.								

Smaller-bigger steps...

Creation of first Common plot seasonal reports

“5.1.3 Common plots. Old plots are going to be removed from COSMO pages and be replaced by a short summary of the common plots for each season. From this year on, the COSMO year starts with summer (at the COSMO GM spring is the last presented season). Task for ALL: send details of common plots: domain, global driving model, number of stations verified”



Verification | Display | **Interpretation and Applications** | Home

Common Verification Reports

Last updated: February 2009

In the framework of COSMO verification activities, statistical scores extracted from CVS (common verification suite) or other packages, are presented for all COSMO countries with the use of a common graphic package.

year	Dec-Jan-Feb	Mar-Apr-May	Jun-Jul-Aug	Sep-Oct-Nov
2012	get pdf	get pdf	N/A	N/A
2011	N/A	N/A	get pdf (for both seasons)	

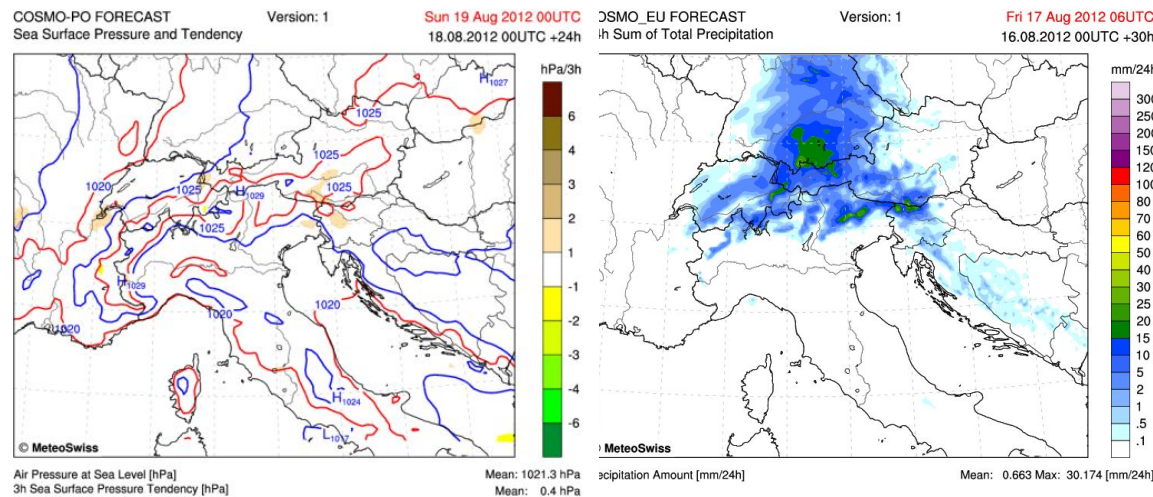
Performance diagrams were recently created for all members by Maria Stefania and decision has to be made whether this can be added on the regular production. The responsibility for this task has to be rotated every year.

COSMO General Meeting Lugano 2012

Smaller-bigger steps...

Changes in the website:

- Old verification pages were moved to new location as there was no updated information sent for many many years.....
- Model Management pages for VERSUS: Release plans, Developments
- Task 5.1.4 Dissemination of grib output, HNMS and NMA now included. Monitoring of precipitation model forecasts for overlapping areas is not yet applied.



Smaller-bigger steps...

- Revised list of Conditional verification tests was prepared and sent to the participants. Communication with WG3a,b was done but no further suggestions were given.
- EPS development became a first priority for the previous months within VERSUS developing team. Two meetings took place in Rome with WG7 people (April,May) in order to help resolve the technical issues and to follow the correct steps for the implementation. Minutes of the first meeting were sent to the WG.
- NWP test suite proposal was prepared by the WG coordinator which will include a standardized verification procedure for each new COSMO model version. As there is no PT leader yet, and if it will be approved by the STC, WG5 people are welcome to undertake this very important Task.

Still a lot to be done.....

Need to create a work priority list after the end of this meeting for the next year.

Let's start!

WCG5

WCG5